

GIVENS AUTOMOTIVE PAINT MIXING ROOMS

Givens Paint Mixing Rooms are designed to give many years of trouble-free service. The incoming air is filtered by Series 55 tacky filters located in the wall of the Paint Mixing Room. This filtered air then passes over the length of the Paint Mixing Room and is exhausted through the exhaust fan located in the roof of the Paint Mixing Room. Givens Paint Mixing Rooms and components conform to Occupational Safety and Health Administration (OSHA) standards, T.N.R.C.C. regulations and NFPA code 33 for construction and function.



All of the *Givens* Paint Mixing Rooms contain these important features:

CONSTRUCTION: American-made mill galvanized steel pre-punched on six inch centers and preformed with 2" X 1" companion flanges.

(1) 12 *United States Wire Gauge* floor channels, since this is the foundation of the mixing room and the first area of deterioration.

(2) 10 *United States Wire Gauge* door frames and reinforcing beams to insure that the Givens mixing room will stand squarely for many years to come.

(3) 18 *United States Wire Gauge* wall and roof panels constituting a two-hour fire wall.

(4) Double 18 *United States Wire Gauge* doors constituting a four-hour fire wall.

Air Filtration: All air filters are Series 55 Rated Tight

Seal Tacky carrying a UL Class 2 approval.

Replacements are available from your paint supplier.

(1) The two each 20" x 20" Series 55 air filters are located in the wall of the Mixing Room.

Lighting: The sealed 160-watt fluorescent light fixtures provided with every Givens Paint Mixing Room are designed for maximum illumination. Sealed light fixtures have no dust build up to block light inside the room. Additional fixtures are available at extra cost.

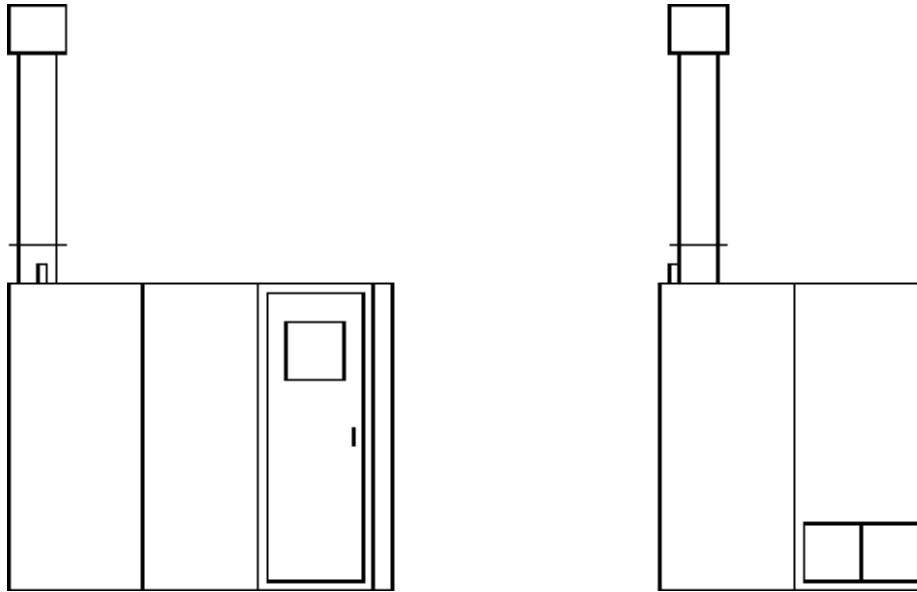
Doors: The Access Door is double walled with a tempered glass observation window. All doors are positively sealed with the use of urethane weather stripping.

GIVENS AUTOMOTIVE PAINT MIXING ROOMS

EXHAUST STACK: Roof flashing, and Weather Canopy are included in the price of your Givens Paint Mixing Room.

DELIVERY & MECHANICAL INSTALLATION: Performed by GIVCO. INC., is included in the price

of your Givens Paint Mixing Room. The only additional expenses to your shop are the plumbing of compressed air, installation of an automatic fire extinguishing system, and the connection of electrical power to the lights and exhaust fan.



Mixing Room Clearance 3'0" All Around Recommended

Booth Model Number	Work Dimensions			Overall Dimensions			Nominal Door Openings		Shpg. Weight Lbs.
	Width	Height	Length	Width	Height	Length	Width	Height	
PMR-10-7	7'0"	8'0"	10'0"	7'5"	8'6"	10'5"	2'6"	6'8"	1400
PMR-14-7	7'0"	8'0"	14'0"	7'5"	8'6"	14'11"	2'6"	6'8"	1800

STANDARD EQUIPMENT FURNISHED

- | | |
|---|---|
| (1) Urethane door seals | (7) 2'6" x 6'8" Personal Access Door can be located on either side of the paint mixing room |
| (2) Double Ring Exhaust Fan powered by a 1 phase Totally enclosed fan cooled electric motor | (8) Weather Canopy |
| (3) One 160 watt 48" sealed Fluorescent Light Fixture shining through 1/4" clear tempered glass | (9) One complete set of Series 55 tight seal tacky air filters |
| (4) Two 5'0' lengths of Exhaust Stack | (10) Silicone caulking |
| (5) Roof Flashing either pitched or flat | (11) All bolts, nuts and Mounting Hardware |
| (6) One Observation Windows located in the Door of the mixing room | (12) Delivery, Mechanical Installation and Initial Start Up by GIVCO, INC. |

OPTIONS AVAILABLE AT EXTRA COST

- | | |
|--|--|
| (1) Additional Light Fixtures | (8) Paint Spray Booths |
| (2) Additional Observation Windows | (9) Prep Stations |
| (3) Fluorescent Light Tubes | (10) Trim Out Booths |
| (4) Motor Starters | (11) Safety Control Devices available. Consult Local codes And GIVCO, INC. for the equipment appropriate for your shop |
| (5) Three Phase Motors | |
| (6) Spray Cure Systems with Auto Balance | |
| (7) Special length, width, and height booths available | |