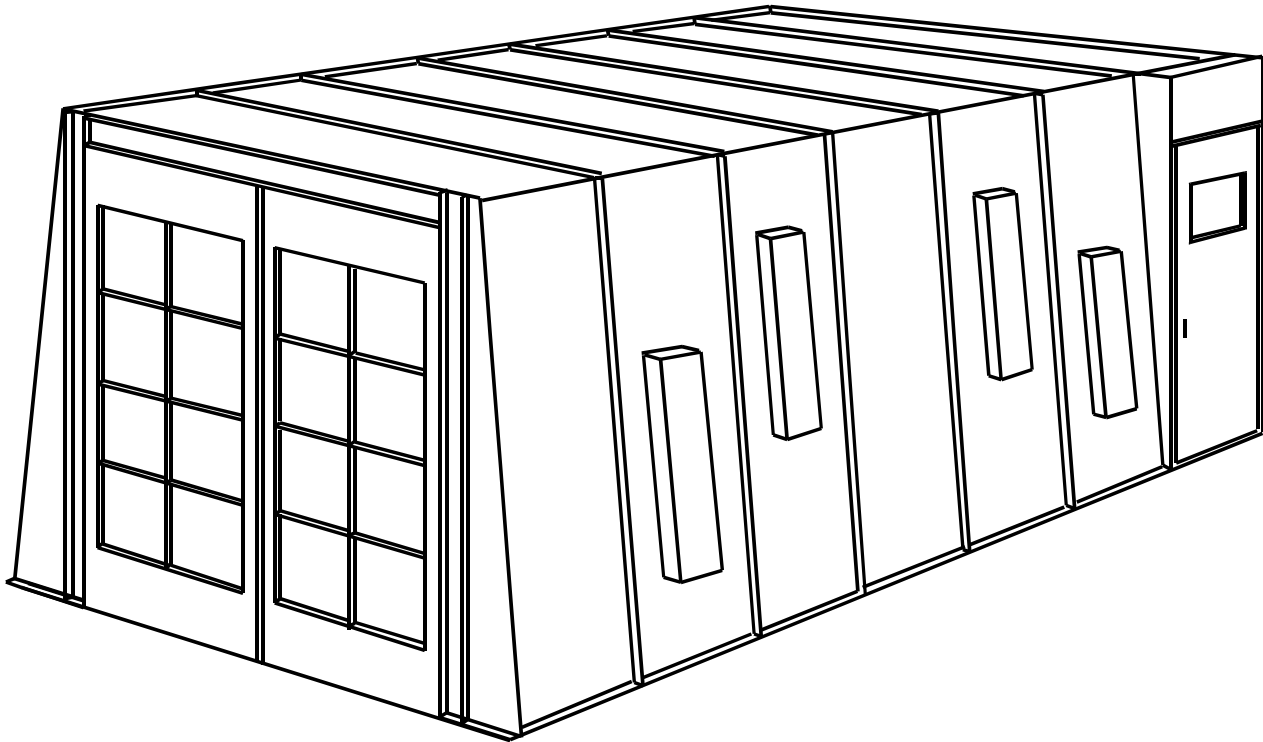


Givens Automotive Paint Spray Booths



GIVENS AUTOMOTIVE PAINT SPRAY BOOTHS

Givens Crossflow Paint Spray Booths are designed to give many years of trouble-free service. The incoming air is filtered by Series 55 tacky filters located in the front doors of the booth. This filtered air then passes over the length of the vehicle being painted and is exhausted through the exhaust filters located in the bottom of the exhaust plenum at the rear of the booth. Givens Crossflow Paint Spray Booths and components conform to Occupational Safety and Health Administration (OSHA) standards, T.N.R.C.C. regulations and NFPA code 33 for construction and function.



*All of the **Givens** Crossflow booths contain these important features:*

CONSTRUCTION: American-made mill galvanized steel preformed with 2" X 1" companion flanges.

(1) 12 *United States Wire Gauge* floor channels, since this is the foundation of the spray booth and the first area of deterioration.

(2) 10 *United States Wire Gauge* door frames and reinforcing beams to insure that the Givens Booth will stand squarely for many years to come.

(3) 18 *United States Wire Gauge* wall and roof panels constituting a two-hour fire wall.

(4) Double 18 *United States Wire Gauge* doors constituting a four-hour fire wall.

Air Filtration: All air filters are Series 55 Rated Tight Seal Tacky carrying a UL Class 2 approval.

Replacements are available from your paint supplier.

(1) The sixteen each 20" x 20" Series 55 air filters are located in the front doors of the Crossflow Booth.

Exhaust Filtration: Fiberglass Exhaust filters 22

gram Extra Heavy Duty 2 ½" thick 41" x 120" (Factory Mutual approved, UL class 2 Listing) insures that more than 96.5% of the over spray particles are trapped. This filter is a continuous piece making it much easier to change than the conventional 20" x 20" pieces. This filter is located at the bottom of the exhaust plenum at the rear of the paint spray booth.

Lighting: The 8 sealed 160-watt fluorescent light fixtures provided with every Givens Crossflow Booth are designed for maximum illumination. Sealed light fixtures have no dust build up to block light inside the booth. Additional fixtures are available at extra cost.

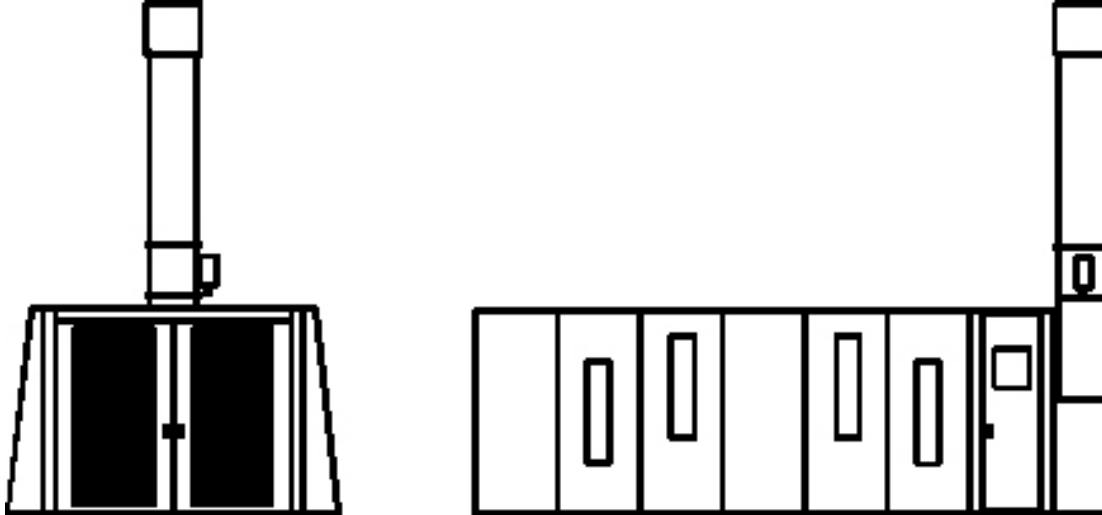
Doors: The Access Door is double walled with a tempered glass observation window. All doors are positively sealed with the use of urethane weather stripping.

GIVENS AUTOMOTIVE PAINT SPRAY BOOTHS

EXHAUST STACK: Roof flashing, Combination Automatic Damper and Weather Canopy are included in the price of your Givens Crossflow Paint Spray Booth.

DELIVERY & MECHANICAL INSTALLATION: Performed by GIVCO. INC., is included in the price

of your Givens Booth. The only additional expenses to your shop are the plumbing of compressed air, installation of an automatic fire extinguishing system, and the connection of electrical power to the lights and exhaust fan.



Booth Clearance 3'0" All Around Recommended

Booth Model Number	Work Dimensions			Overall Dimensions			Nominal Door Openings		Shpg. Weight Lbs.
	Width	Height	Length	Width	Height	Length	Width	Height	
ST1000	14'0"	8'0"	24'0"	14'5"	8'3"	27'5"	10'0"	7'6"	5400
ST1028	14'0"	8'0"	28'0"	14'5"	8'3"	31'11"	10'0"	7'6"	5800

STANDARD EQUIPMENT FURNISHED

- | | |
|--|---|
| (1) Draft Gauge | (8) on either side of the paint spray booth |
| (2) Double Ring Exhaust Fan powered by a 3 phase totally enclosed fan cooled electric motor | (8) Combination Automatic Damper and Weather Canopy. |
| (3) Eight 160 watt 48" sealed Fluorescent Light Fixtures shining through 1/4" clear tempered glass | (9) One complete set of Series 55 tight seal tacky air filters |
| (4) Three 4'0' lengths of Exhaust Stack | (10) Extra Change of 22 gram Extra Heavy Duty Exhaust Filter Media |
| (5) Roof Flashing either pitched or flat | (11) All 1 1/4"x3/4' tek screws and Mounting Hardware |
| (6) One Observation Window located in the Doors of the paint booth | (12) Delivery, Mechanical Installation and Initial Start Up by GIVCO, INC |
| (7) 2'6" x 6'8" Personal Access Door can be located | |

OPTIONS AVAILABLE AT EXTRA COST

- | | |
|---|---|
| (1) Additional Light Fixtures | (7) Special length, width, and height booths available |
| (2) Additional Observation Windows | (8) Paint Mixing Rooms |
| (3) Fluorescent Light Tubes | (9) Prep Stations |
| (4) Motor Starters | (10) Trim Out Booths |
| (5) Single Phase Motors | (11) Safety Control Devices available. Consult local codes and GIVCO, INC. for the equipment appropriate for your shop. |
| (6) Spray Cure Systems with Auto Balance | |

GIVENS ***AUTOMOTIVE PAINT SPRAY BOOTHS***

ST-1000 CROSSFLOW PAINT SPRAY BOOTH



FRONT OUTSIDE



FRONT INSIDE



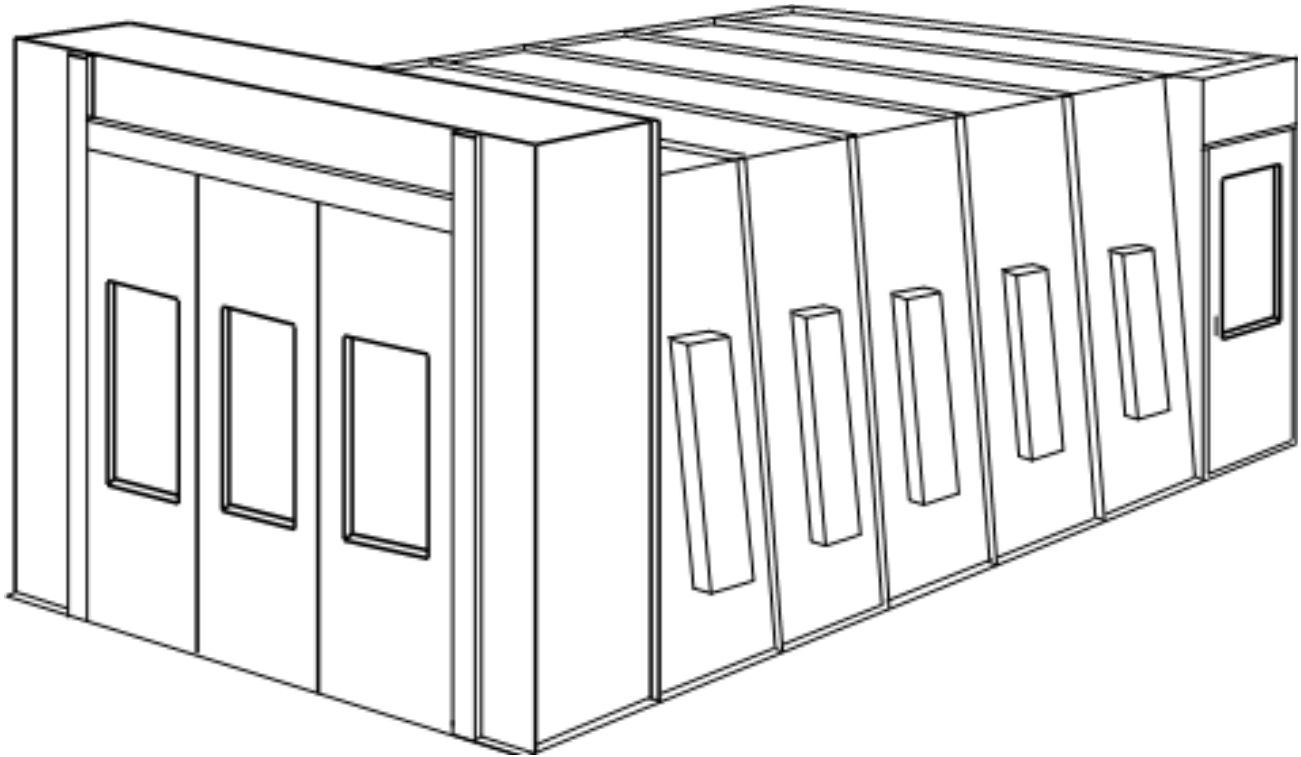
LEFT SIDE



BACK OUTSIDE

GIVENS AUTOMOTIVE PAINT SPRAY BOOTHS

Givens Reverse flow Paint Spray Booths are designed to give many years of trouble-free service. The incoming air is filtered by Series 55 tacky filters located in the rear wall of the booth. This filtered air then passes over the length of the vehicle being painted and is exhausted through the exhaust filters located in the exhaust plenum at the front of the booth. Givens Reverse flow Paint Spray Booths and components conform to Occupational Safety and Health Administration (OSHA) standards, T.N.R.C.C. regulations and NFPA code 33 for construction and function.



*All of the **Givens** Reverse flow booths contain these important features:*

CONSTRUCTION: American-made mill galvanized steel preformed with 2" X 1" companion flanges.

(1) *14 United States Wire Gauge* floor channels, since this is the foundation of the spray booth and the first area of deterioration.

(2) *14 United States Wire Gauge* door frames and reinforcing beams to insure that the Givens Booth will stand squarely for many years to come.

(3) *18 United States Wire Gauge* wall and roof panels constituting a two-hour fire wall.

(4) *Double 18 United States Wire Gauge* doors constituting a four-hour fire wall.

Air Filtration: All air filters are Series 55 Rated Tight Seal Tacky carrying a UL Class 2 approval.

Replacements are available from your paint supplier.

(1) The sixteen each 20" x 20" Series 55 air filters are located in the front doors of the Crossflow Booth.

Exhaust Filtration: Fiberglass Exhaust filters 22

gram Extra Heavy Duty 2 ½" thick 41" x 120" (Factory Mutual approved, UL class 2 Listing) insures that more than 96.5% of the over spray particles are trapped. This filter is a continuous piece making it much easier to change than the conventional 20" x 20" pieces. This filter is located at the bottom of the exhaust plenum at the rear of the paint spray booth.

Lighting: The 12 sealed 128-watt fluorescent light fixtures provided with every Givens Reverse flow Booth are designed for maximum illumination. Sealed light fixtures have no dust build up to block light inside the booth. Additional fixtures are available at extra cost.

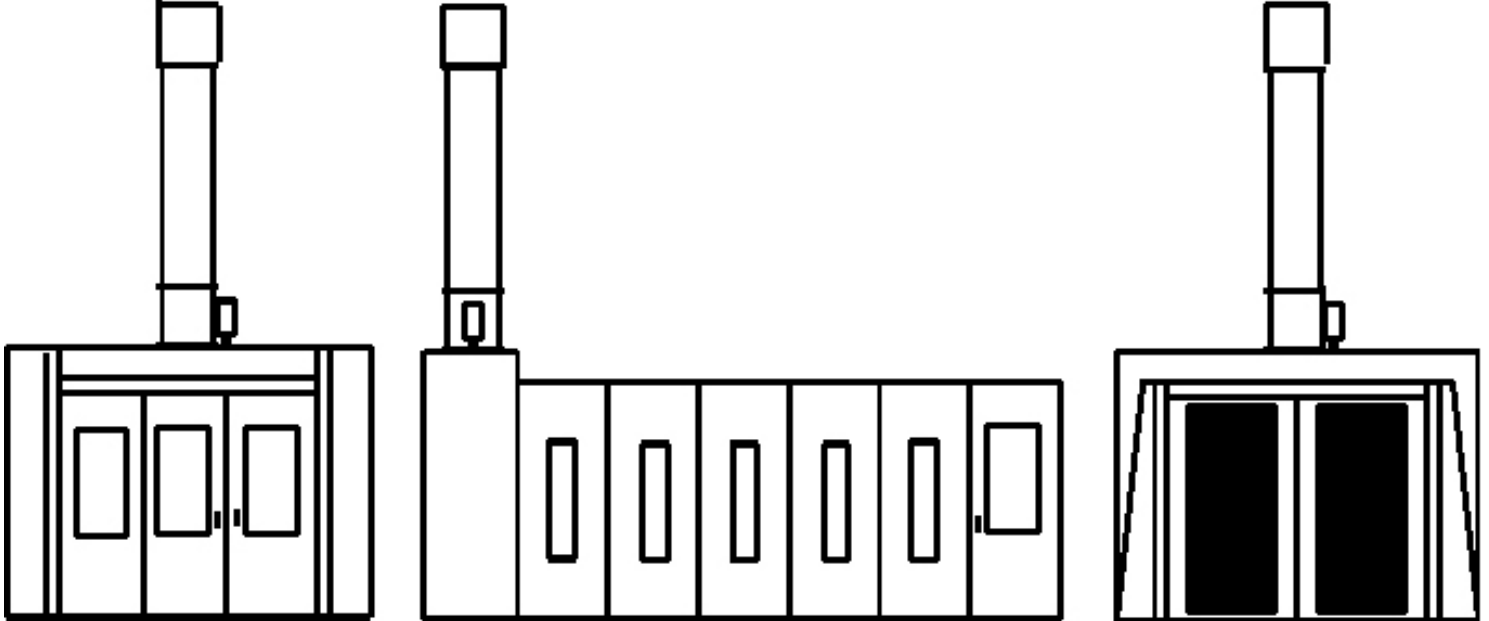
Doors: The Access Door is double walled with a tempered glass observation window. All doors are positively sealed with the use of urethane weather stripping.

GIVENS AUTOMOTIVE PAINT SPRAY BOOTHS

EXHAUST STACK: Roof flashing, Combination Automatic Damper and Weather Canopy are included in the price of your Givens Reverse flow Paint Spray Booth.

DELIVERY & MECHANICAL INSTALLATION: Performed by GIVCO, INC., is included in the price

of your Givens Booth. The only additional expenses to your shop are the plumbing of compressed air, installation of an automatic fire extinguishing system, and the connection of electrical power to the lights and exhaust fan.



Booth Clearance 3'0" All Around Recommended

Booth Model Number	Work Dimensions			Overall Dimensions			Nominal Door Openings		Shpg. Weight Lbs.
	Width	Height	Length	Width	Height	Length	Width	Height	
ST1224	14'0"	9'0"	24'6"	14'5"	10'3"	27'11"	10'0"	7'9"	5400
ST1228	14'0"	9'0"	28'0"	14'5"	10'3"	31'11"	10'0"	7'9"	5800

STANDARD EQUIPMENT FURNISHED

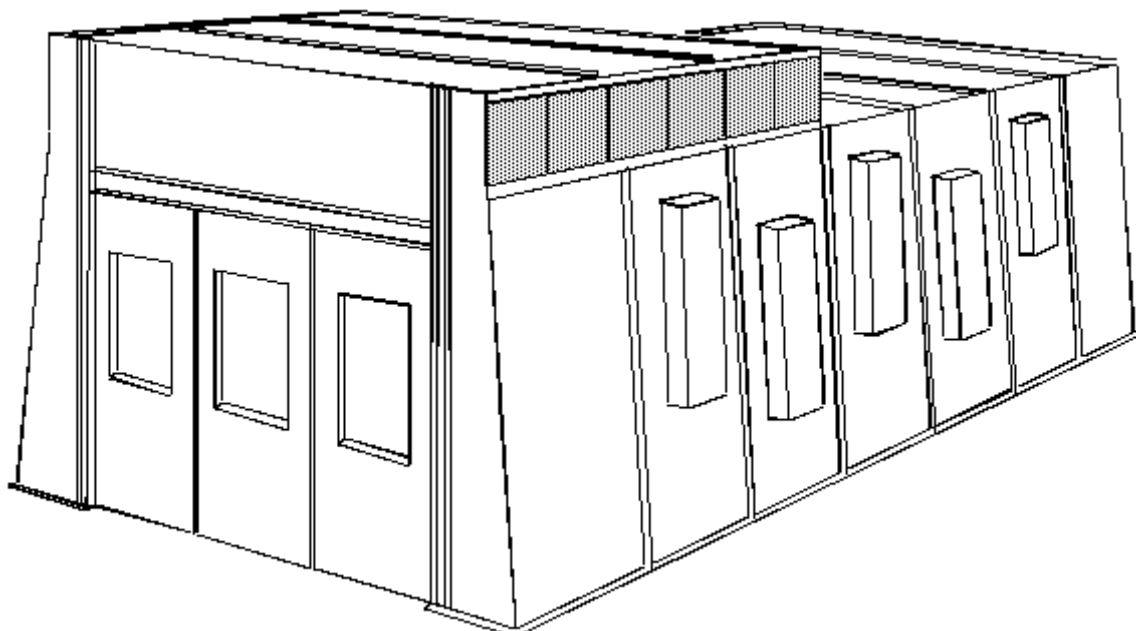
- | | |
|--|---|
| (1) Draft Gauge | (8) on either side of the paint spray booth |
| (2) Double Ring Exhaust Fan powered by a 3 phase totally enclosed fan cooled electric motor | (8) Combination Automatic Damper and Weather Canopy. |
| (3) Twelve 128 watt 48" sealed Fluorescent Light Fixtures shining through 3/16" clear tempered glass | (9) One complete set of Series 55 tight seal tacky air filters |
| (4) Two 4'0' lengths of Exhaust Stack | (10) Extra Change of 22 gram Extra Heavy Duty Exhaust Filter Media |
| (5) Roof Flashing either pitched or flat | (11) All bolts, nuts and Mounting Hardware |
| (6) One Observation Window located in the Doors of the paint booth | (12) Delivery, Mechanical Installation and Initial Start Up by GIVCO, INC |
| (7) 2'6" x 6'8" Personal Access Door can be located | |

OPTIONS AVAILABLE AT EXTRA COST

- | | |
|---|--|
| (1) Additional Light Fixtures | (7) Special length, width, and height booths available |
| (2) Additional Observation Windows | (8) Paint Mixing Rooms |
| (3) Fluorescent Light Tubes | (9) Prep Stations |
| (4) Motor Starters | (10) Trim Out Booths |
| (5) Single Phase Motors | (11) Safety Control Devices available. Consult local codes and GIVCO, INC. for the equipment appropriate for your shop |
| (6) Spray Cure Systems with Auto Balance | |

GIVENS SEMI-DOWNDRAFT PAINT SPRAY BOOTH

Givens Semi-Downdraft Paint Spray Booths are designed to give many years of trouble-free service. This style booth will produce a much cleaner paint job than the cross-flow style, because the incoming air enters the pre-filters which are located on either side in the top air inlet plenum. The incoming air is filtered a second time through two R-1 48" x 108" filters located in the ceiling at the front of the booth. This filtered air then passes over the length of the vehicle being painted and is exhausted through the exhaust filters located in the bottom of the exhaust plenum at the rear of the booth. Givens Semi-Downdraft Paint Spray Booths and components conform to Occupational Safety and Health Administration (OSHA) standards, T.N.R.C.C. regulations and NFPA code 33 for construction and function.



*All of the **Givens** Semi-Downdraft booths contain these important features:*

CONSTRUCTION: American-made mill galvanized steel preformed with 2" X 1" companion flanges and holes punched on six inch centers.

(1) 12 *United States Wire Gauge* floor channels, since this is the foundation of the spray booth and the first area of deterioration.

(2) 10 *United States Wire Gauge* door frames and reinforcing beams to insure that the Givens Booth will stand squarely for many years to come.

(3) 18 *United States Wire Gauge* wall and roof panels constituting a two-hour fire wall.

(4) Double 18 *United States Wire Gauge* doors constituting a four-hour fire wall.

Air Filtration: All air filters are Series 55 Rated Tight Seal Tacky carrying a UL Class 2 approval.

Replacements are available from your paint supplier.

(1) The two each 52" x 112" Series 55 air filters are located in the ceiling.

(2) The 12 pre-filters located on either side of the air intake plenum double filter the incoming air before it reaches the vehicle being painted. They also help the two each 48" x 108" Series 55 ceiling filters to last six to twelve times longer, thus saving money over the years.

Exhaust Filtration: Fiberglass Exhaust filters 22 gram Extra Heavy Duty 2 ½" thick 41" x 172" (Factory Mutual approved, UL class 2 Listing) insures that more than the two each 48" x 108" Series 55 ceiling filters to last six to twelve times longer, thus saving money over the years.

Exhaust Filtration: Fiberglass Exhaust filters 22 gram Extra Heavy Duty 2 ½" thick 41" x 172" (Factory Mutual approved, UL class 2 Listing) insures that more than 96.5% of the over spray particles are trapped. This filter is in three 54" pieces making it much easier to change than the conventional 20" x 20" pieces. This filter is located at the bottom of the exhaust plenum at the rear of the paint spray booth.

Lighting: The 10 sealed 160-watt fluorescent light fixtures provided with every Givens Semi-Downdraft Booth are designed for maximum illumination inside the booth. Sealed light fixtures have no dust build up to block light inside the booth. Additional fixtures are available at extra cost.

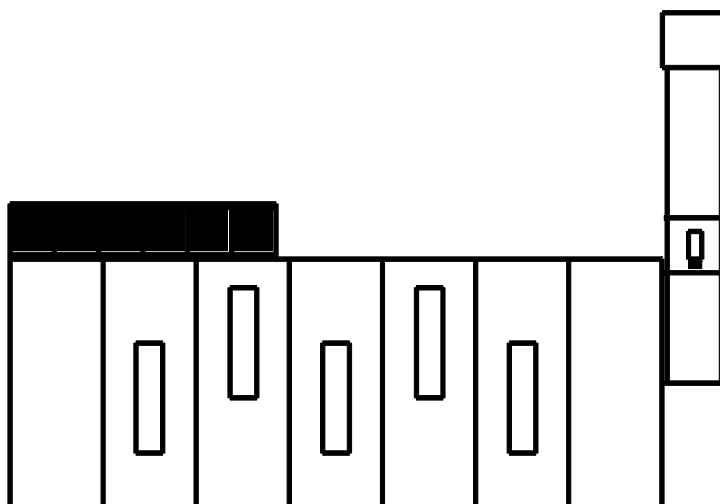
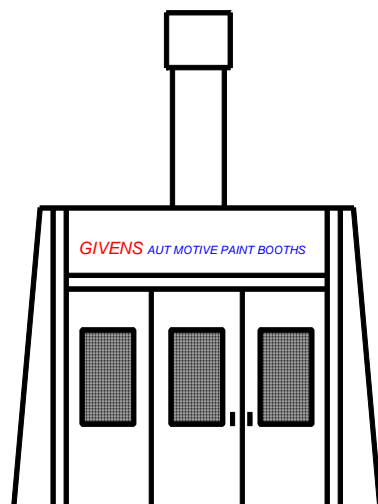
Doors: Doors are double walled with tempered glass observation windows. All doors are positively sealed with the use of urethane weather stripping.

GIVENS SEMI-DOWNDRAFT PAINT SPRAY BOOTH

EXHAUST STACK: Roof flashing, Combination Automatic Damper and Weather Canopy are included in the price of your Givens Semi-Downdraft Paint Spray Booth.

DELIVERY & MECHANICAL INSTALLATION: Performed by GIVCO. INC., is included in the price

of your Givens Booth. The only additional expenses to your shop are the plumbing of compressed air, installation of an automatic fire extinguishing system, and the connection of electrical power to the lights and exhaust fan.



Booth Clearance 3'0" All Around Recommended

Booth Model Number	Work Dimensions			Overall Dimensions			Nominal Door Openings		Shpg. Weight Lbs.
	Width	Height	Length	Width	Height	Length	Width	Height	
ST1500	14'0"	9'0"	24'6"	14'5"	11'0"	27'5"	10'0"	8'0"	5600
ST1528	14'0"	9'0"	28'0"	14'5"	11'0"	30'11"	10'0"	8'0"	6100

STANDARD EQUIPMENT FURNISHED

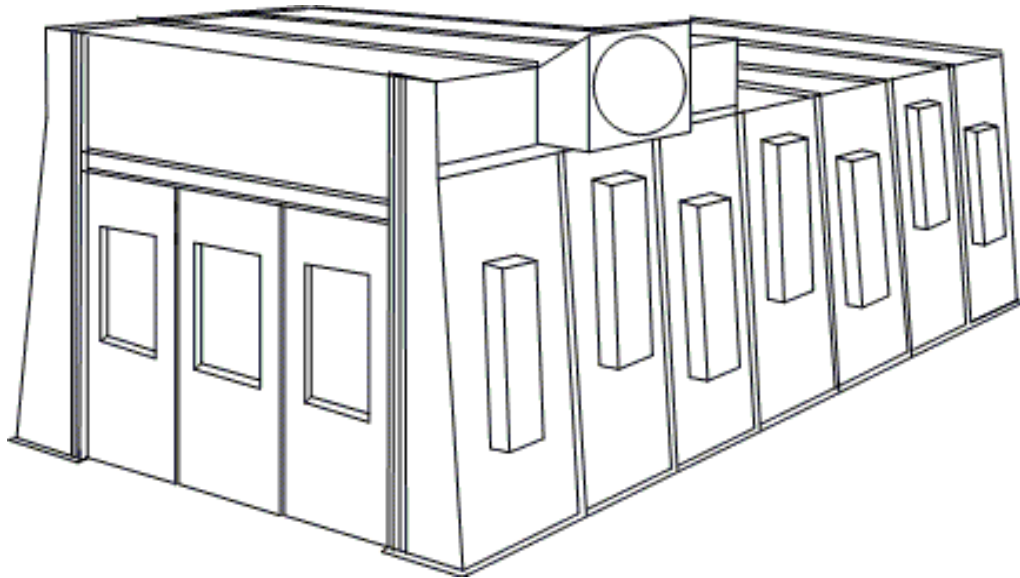
- | | |
|---|---|
| (1) Draft Gauge | (8) Canopy |
| (2) Double Ring Exhaust Fan powered by a 3 phase totally enclosed fan cooled electric motor | (8) One complete set of Series 55 prefilters and Ceiling filters |
| (3) Ten 160 watt 48" sealed Fluorescent Light Fixtures shining through 3/16" clear tempered glass | (9) Extra Change of 22 gram Extra Heavy Duty Exhaust Filter Media |
| (4) Three 4'0' lengths of Exhaust Stack | (10) One 2'6" X 6'8" Personal Access Door |
| (5) Roof Flashing either pitched or flat | (11) All bolts, nuts and Mounting Hardware |
| (6) Four Observation Windows located in the Doors of the paint booth | (12) Delivery, Mechanical Installation and Initial Start Up by GIVCO, INC |
| (7) Combination Automatic Damper and Weather | |

OPTIONS AVAILABLE AT EXTRA COST

- | | |
|---|--|
| (1) Additional Light Fixtures | (8) Special length, width, and height booths available |
| (2) Additional Observation Windows | (9) Paint Mixing Rooms |
| (3) Fluorescent Light Tubes | (10) Prep Stations |
| (4) Motor Starters | (11) Trim Out Booths |
| (5) Single Phase Motors | (12) Safety Control Devices available. Consult local codes and GIVCO, INC. for the equipment appropriate for your shop |
| (6) Spray Cure Systems with Auto Balance | |
| (7) Drive Through Option | |

GIVENS SEMI-DOWNDRAFT PRESSURIZED PAINT SPRAY BOOTH

Givens Semi-Downdraft Paint Spray Booths are designed to give many years of trouble-free service. This style booth will produce a much cleaner paint job than a negative pressure booth, because an air intake fan pushes the incoming air into the pre-filters which are located on the side in the top air inlet plenum. The incoming air is filtered a second time through two R-1 48" x 108" filters located in the ceiling at the front of the booth. This filtered air then passes over the length of the vehicle being painted and is exhausted through the exhaust filters located in the bottom of the exhaust plenum at the rear of the booth. This balance of air is controlled by our **auto balance** feature which automatically and continuously senses the static pressure inside the booth and electronically controls a damper which keeps the air flow balanced. Givens Semi-Downdraft Paint Spray Booths and components conform to Occupational Safety and Health Administration (OSHA) standards, T.N.R.C.C. regulations and NFPA code 33 for construction and function.



*All of the **Givens** Semi-Downdraft booths contain these important features:*

CONSTRUCTION: American-made mill galvanized steel preformed with 2" X 1" companion flanges and holes punched on six inch centers.

(1) 12 *United States Wire Gauge* floor channels, since this is the foundation of the spray booth and the first area of deterioration.

(2) 10 *United States Wire Gauge* door frames and reinforcing beams to insure that the Givens Booth will stand squarely for many years to come.

(3) 18 *United States Wire Gauge* wall and roof panels constituting a two-hour fire wall.

(4) Double 18 *United States Wire Gauge* doors constituting a four-hour fire wall.

Air Filtration: All air filters are Series 55 Rated Tight Seal Tacky carrying a UL Class 2 approval.

Replacements are available from your paint supplier.

(1) The two each 52" x 112" AFR-1 air filters are located in the ceiling.

(2) The 6 pre-filters located on either side of the air intake plenum double filter the incoming air before it

reaches the vehicle being painted. They also help the two each 48" x 108" Afr-1 ceiling filters to last six to twelve times longer, thus saving money over the years.

Exhaust Filtration: Fiberglass Exhaust filters 22 gram Extra Heavy Duty 2 ½" thick 41" x 172" (Factory Mutual approved, UL class 2 Listing) insures that more than 96.5% of the over spray particles are trapped. This filter is in three 54" pieces making it much easier to change than the conventional 20" x 20" pieces. This filter is located at the bottom of the exhaust plenum at the rear of the paint spray booth.

Lighting: The 13 sealed 132-watt, T-8, fluorescent light fixtures provided with every Givens Semi-Downdraft Booth are designed for maximum illumination inside the booth. Sealed light fixtures have no dust build up to block light inside the booth. Additional fixtures are available at extra cost.

Doors: Doors are double walled with tempered glass observation windows. All doors are positively sealed with the use of urethane weather stripping.

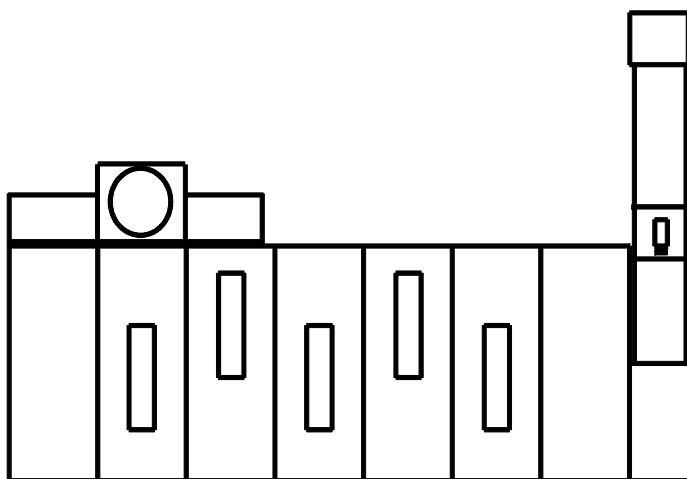
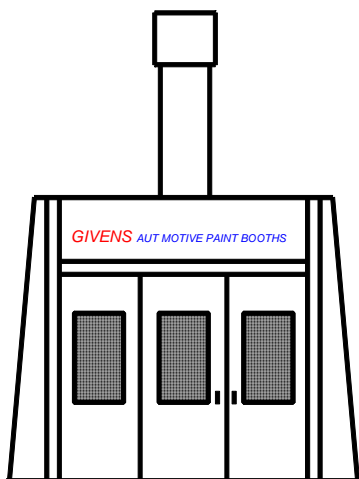
GIVENS SEMI-DOWNDRAFT PRESSURIZED PAINT SPRAY BOOTH

EXHAUST STACK: Roof flashing, Combination Automatic Damper and Weather Canopy are included in the price of your Givens Semi-Downdraft Paint Spray Booth.

DELIVERY & MECHANICAL INSTALLATION:

Performed by GIVCO. INC., is included in the price

of your Givens Booth. The only additional expenses to your shop are the plumbing of compressed air, installation of an automatic fire extinguishing system, and the connection of electrical power to the lights, intake and exhaust fans.



Booth Clearance 3'0" All Around Recommended

Booth Model Number	Work Dimensions			Overall Dimensions			Nominal Door Openings		Shpg. Weight Lbs.
	Width	Height	Length	Width	Height	Length	Width	Height	
ST1500	14'0"	9'0"	24'6"	14'5"	11'0"	27'5"	10'0"	8'0"	5600
ST1528	14'0"	9'0"	28'0"	14'5"	11'0"	30'11"	10'0"	8'0"	6100

STANDARD EQUIPMENT FURNISHED

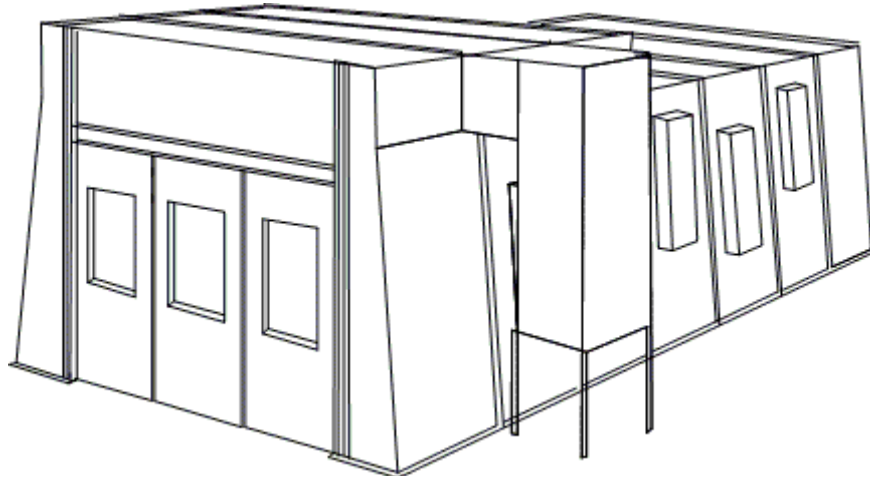
- | | |
|---|---|
| (1) Draft Gauge | (8) Canopy |
| (2) Double Ring Exhaust Fan powered by a 3 phase totally enclosed fan cooled electric motor | (8) One complete set of Series 55 prefilters and Ceiling filters |
| (3) Ten 160 watt 48" sealed Fluorescent Light Fixtures shining through 3/16" clear tempered glass | (9) Extra Change of 22 gram Extra Heavy Duty Exhaust Filter Media |
| (4) Three 4'0' lengths of Exhaust Stack | (10) One 2'6" X 6'8" Personal Access Door |
| (5) Roof Flashing either pitched or flat | (11) All bolts, nuts and Mounting Hardware |
| (6) Four Observation Windows located in the Doors of the paint booth | (12) Delivery, Mechanical Installation and Initial Start Up by GIVCO, INC |
| (7) Combination Automatic Damper and Weather | |

OPTIONS AVAILABLE AT EXTRA COST

- | | |
|---|--|
| (1) Additional Light Fixtures | (8) Special length, width, and height booths available |
| (2) Additional Observation Windows | (9) Paint Mixing Rooms |
| (3) Fluorescent Light Tubes | (10) Prep Stations |
| (4) Motor Starters | (11) Trim Out Booths |
| (5) Single Phase Motors | (12) Safety Control Devices available. Consult local codes and GIVCO, INC. for the equipment appropriate for your shop |
| (6) Spray Cure Systems with Auto Balance | |
| (7) Drive Through Option | |

GIVENS SEMI-DOWNDRAFT PAINT SPRAY BOOTH

Givens Semi-Downdraft Paint Spray Booths are designed to give many years of trouble-free service. This style booth will produce a much cleaner paint job than the cross-flow style, because the incoming air enters the pre-filters which are located on either side in the top air inlet plenum. The incoming air is filtered a second time through two R-1 48" x 108" filters located in the ceiling at the front of the booth. This filtered air then passes over the length of the vehicle being painted and is exhausted through the exhaust filters located in the bottom of the exhaust plenum at the rear of the booth. Givens Semi-Downdraft Paint Spray Booths and components conform to Occupational Safety and Health Administration (OSHA) standards, T.N.R.C.C. regulations and NFPA code 33 for construction and function.



*All of the **Givens** Semi-Downdraft booths contain these important features:*

THE SPRAY CURE SYSTEM: This system brings the incoming air in by use of an air intake fan, at a slightly greater amount than what is discharged; hence opening and closing of an access door will not effect the cleanliness of a paint job. This balance of air is controlled by our **auto balance** feature which automatically and continuously senses the static pressure inside the booth and electronically controls a damper which keeps the air flow balanced. Another benefit of **auto balance** is it enables the exhaust filter to be used for a longer period of time before changing. The heating unit used is direct gas fired which is 100% efficient and has the capacity of a 90F rise over the ambient temperature of the air outside. This unit can be ordered to fire on butane, natural gas or both fuel sources. This heater complies with all government regulations.

The Spray Cure System has a state of the art remote control panel which will perform the following functions:

- (1) Ability to spray paint with or without heat. With heat controlled from an adjustable thermostat 60-90 degrees.
- (2) After painting the booth can be purged with or without heat controlled from a 60-90 degree thermostat, and with a 0-60 minute timer.

- (3) When the purge cycle is completed automatically the cure cycle begins controlled by a 0-60 minute timer and a 95-140 degree thermostat. During this operation the air flow of the booth is cut by approximately 50% hence cutting the consumption of gas by the same percentage, however the temperature rise capability almost doubles compared to the spray position.

- (4) When the cure cycle is completed automatically the cool down cycle begins controlled by a 0-60 minute timer. With or without heat controlled by a 60-95 degree thermostat.

- (5) When the cool down cycle is completed the unit automatically shuts off.

- (6) All the timers stay automatically set so the only time they need to be adjusted is when a particular painting operation requires a different time period. The same applies to the thermostats. The remote control panel also has an L.E.D. thermometer which shows the temperature inside the paint spray booth. It is easy to see the spray cure system is user friendly and will increase your Givens Paint Booth production on a cool day by at least 100% or on a warm day by 50%. At all times cars can be assembled the same day they are painted and then delivered.

GIVENS SEMI-DOWNDRAFT PAINT SPRAY BOOTH

Construction: American-made mill galvanized steel preformed with 2" X 1" companion flanges and holes punched on six inch centers.

(1) 12 *United States Wire Gauge* floor channels, since this is the foundation of the spray booth and the first area of deterioration.

(2) 10 *United States Wire Gauge* door frames and reinforcing beams to insure that the Givens Booth will stand squarely for many years to come.

(3) 18 *United States Wire Gauge* wall and roof panels constituting a two-hour fire wall.

(4) *Double 18 United States Wire Gauge* doors constituting a four-hour fire wall.

Air Filtration: All air filters are AFR-1 Rated Tight Seal Tacky carrying a UL Class 2 approval. Replacements are available from your paint supplier.

(1) The two each 48" x 100" R-1 air filters located in the ceiling cut air velocity by one-third, making it three times as efficient as a cross flow booth with one-third the filter area.

(2) The 6 pre-filters located in the side of the air intake plenum double filter the incoming air before it reaches the vehicle being painted. They also help the two each 48" x 100" R-1 ceiling filters to last six to twelve times longer, thus saving money over the years.

Exhaust Filtration: Fiberglass Exhaust filters 22 gram

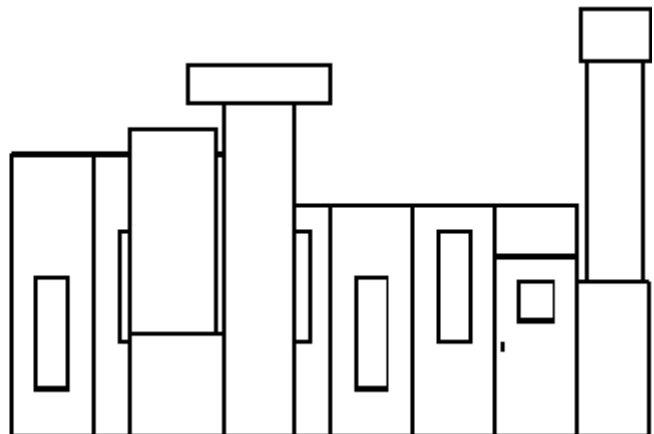
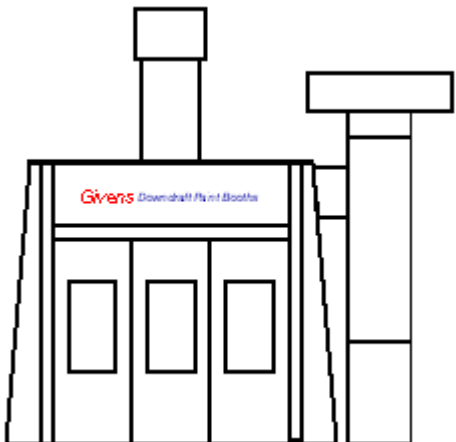
Extra Heavy Duty 2 ½" thick 41" x 168" (Factory Mutual approved, UL class 2 Listing) insures that more than 96.5% of the over spray particles are trapped. Having this extra large filter area, the frequency of filter change is cut to a minimum. This filter is located in the exhaust plenum at the back of the paint booth.

Lighting: The 14 sealed 136 watt, T-8 fluorescent light fixtures provided with every Givens Semi-Downdraft Booth are designed for maximum illumination. Sealed light fixtures have no dust build up to block light inside the booth. Additional fixtures are available at extra cost.

Doors: Doors are double walled with tempered glass observation windows. All doors are positively sealed with the use of urethane weather stripping.

Exhaust Stack: Roof Flashing, Combination Automatic Damper and Weather Canopy are included in the price of your Givens Downdraft Paint Spray Booth.

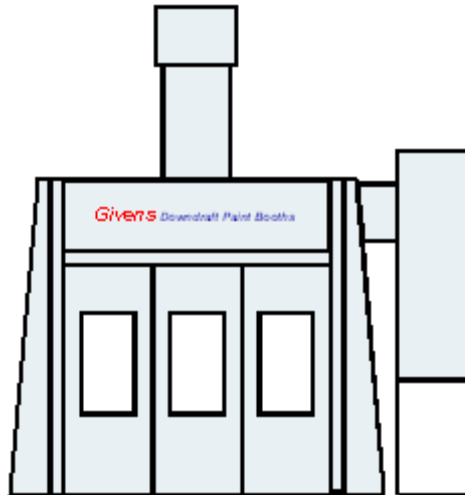
Delivery & Mechanical Installation: Performed by GIVCO, INC., is included in the price of your Givens Booth. The only additional expenses to your shop are the plumbing of compressed air, gas, installation of an automatic fire extinguishing system, construction of the exhaust pit, and the connection of electrical power to the lights, exhaust fan and heated air make-up unit.



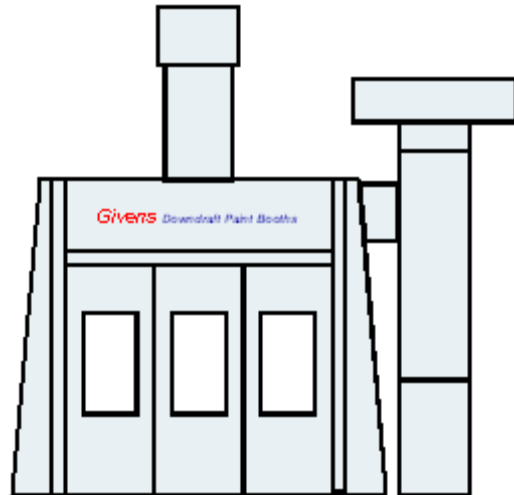
Booth Clearance 3'0" All Around Recommended

Booth Model Number	Work Dimensions			Overall Dimensions			Nominal Door Openings		Shpg. Weight
	Width	Height	Length	Width	Height	Length	Width	Height	
ST1500	14'0"	9'0"	24'6"	14'5"	11'3"	27'6"	10'0"	8'0"	6100
ST1528	14'0"	9'0"	28'0"	14'5"	11'3"	31'6"	10'0"	8'0"	6600

GIVENS SEMI-DOWNDRAFT PAINT SPRAY BOOTH



ST-1500-1



ST-1500-2

The ST-2000-1 IS A COST EFFECTIVE ANSWER WHEN THE BOOTH CAN BE INSTALLED NEXT TO AN EXTERIOR WALL SO THE SPRAY CURE UNIT CAN BE PLACED OUTSIDE OR IN A BUILDING OR ROOM WHOSE SHOP AIR IS ALMOST AS CLEAN AS THE AIR OUTSIDE. OTHERWISE THE ST2000-2 IS THE RIGHT ANSWER.

STANDARD EQUIPMENT FURNISHED

- | | |
|---|---|
| (1) <i>Draft Gauge</i> | (8) <i>Combination Automatic Damper and Weather Canopy</i> |
| (2) <i>Double Ring Exhaust Fan powered by a 3 phase Totally enclosed fan cooled electric motor</i> | (9) <i>One complete set of Series 55 prefilters and R-1 Ceiling filters</i> |
| (3) <i>Fourteen 160 watt 48" sealed Fluorescent Light Fixtures for Class I Division II locations shining through 1/4" tempered glass</i> | (10) <i>Extra Change of 22 gram Extra Heavy Duty Exhaust Filter Media</i> |
| (4) <i>Five 4'0" lengths of Exhaust Stack</i> | (11) <i>The Personal Access Door Is Incorporated In The Front Doors Of The Paint Spray Booth</i> |
| (5) <i>Roof Flashing either pitched or flat</i> | (12) <i>All Nuts, Bolts and Mounting Hardware</i> |
| (6) <i>Three Observation Windows located in the Doors of the paint booth</i> | (13) <i>Delivery, Mechanical Installation and Initial Start Up by GIVCO, INC.</i> |
| (7) <i>Spray cure heated air make-up unit with</i>
<i>AUTO BALANCE</i> | |

OPTIONS AVAILABLE AT EXTRA COST

- | | |
|--|--|
| (1) <i>Additional Light Fixtures</i> | (9) <i>Drying Room enclosures</i> |
| (2) <i>Additional Observation Windows</i> | (10) <i>Paint Mixing Rooms</i> |
| (3) <i>Fluorescent Light Tubes</i> | (11) <i>Prep Stations</i> |
| (4) <i>Motor Starters</i> | (12) <i>Trim Out Booths</i> |
| (5) <i>Single Phase Motors</i> | (13) <i>Safety Control Devices available. Consult Local codes And GIVCO, INC. for the equipment appropriate for your shop</i> |
| (6) <i>Drive Through Option</i> | |
| (7) <i>Special length, width, and height booths available</i> | |
| (8) <i>Raised floor Downdraft Booths</i> | |

GIVENS SEMI-DOWNDRAFT PAINT SPRAY BOOTH

ST-1500 SEMI-DOWNDRAFT PAINT SPRAY BOOTH



FRONT OUTSIDE



FRONT INSIDE



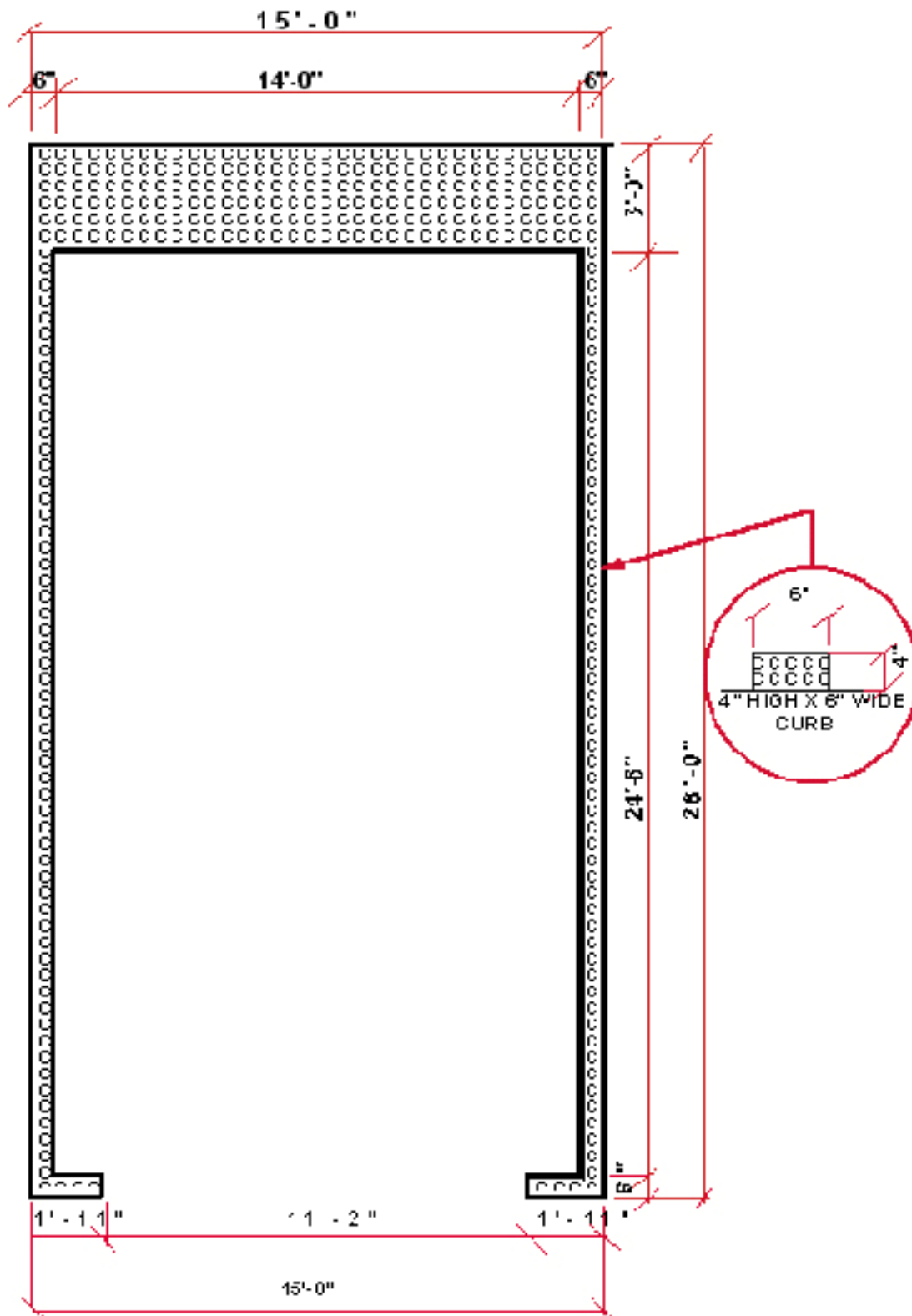
LEFT SIDE



BACK OUTSIDE

GIVENS AUTOMOTIVE PAINT SPRAY BOOTHS

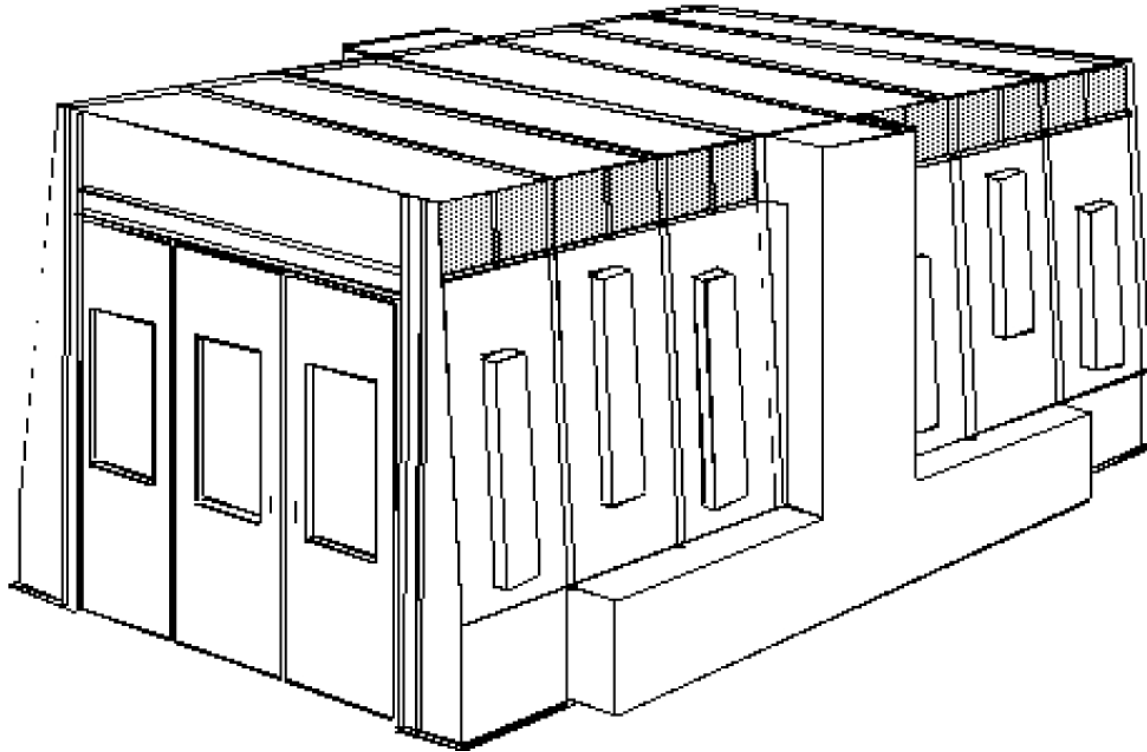
CURB DRAWING FOR ST-1000 & ST1500



GIVCO, INC. 22133 Old Nacogdoches Rd. New Braunfels, TX 78132 Phone: (830) 624-8598 Fax: (830) 625-0724

GIVENS SIDE EXHAUST DOWNDRAFT PAINT SPRAY BOOTH

Givens Side Exhaust Downdraft Paint Spray Booths are designed to give many years of trouble-free service. This style booth will produce a much cleaner paint job than the cross-flow style, because the incoming air enters the pre-filters which are located in the top air inlet plenum. The incoming air is filtered a second time through four Series 55 48" x 108" filters located in the ceiling of the paint booth. This filtered air then passes over the top of the vehicle being painted and is exhausted through the exhaust filters located in the bottom of the exhaust plenums on either side of the booth. Givens Side Exhaust Downdraft Paint Spray Booths and components conform to Occupational Safety and Health Administration (OSHA) standards, T.N.R.C.C. regulations and NFPA code 33 for construction and function.



This *Givens* Side Exhaust Downdraft booth contains these important features:

CONSTRUCTION: American-made mill galvanized steel preformed with 2" X 1" companion flanges and holes punched on six inch centers.

(1) 12 United States Wire Gauge floor channels, since this is the foundation of the spray booth and the first area of deterioration.

(2) 10 United States Wire Gauge door frames and reinforcing beams to insure that the Givens Booth will stand squarely for many years to come.

(3) 18 United States Wire Gauge wall and roof panels constituting a two-hour fire wall.

(4) Double 18 United States Wire Gauge doors constituting a four-hour fire wall.

Air Filtration: All air filters are Series 55 Rated Tight Seal Tacky carrying a UL Class 2 approval. Replacements are available from your paint supplier.

(1) The four each 48" x 108" Series 55 air filters located in the ceiling cut the air velocity by one third, making it three times as efficient as a cross flow booth with one third the filter area.

(2) The 12 pre-filters located on the top of the air intake plenum double filter the incoming air before it reaches the vehicle being painted. They also help the four each 48" x 108" Series 55 ceiling filters to last six to twelve times longer, thus saving money over the years.

Exhaust Filtration: Fiberglass Exhaust filters 22 gram Extra Heavy Duty 2 1/2" thick 20" x 400" (Factory Mutual approved, UL class 2 Listing) insures that more than 96.5% of the over spray particles are trapped. This filter is located at the bottom of the exhaust plenums on either side of the paint spray booth.

Lighting: The 12 sealed 160-watt fluorescent light fixtures provided with every Givens Semi-Downdraft Booth are designed for maximum illumination inside the booth. Sealed light fixtures have no dust build up to block light inside the booth. Additional fixtures are available at extra cost.

Doors: Doors are double walled with tempered glass observation windows. All doors are positively sealed with the use of urethane weather stripping.

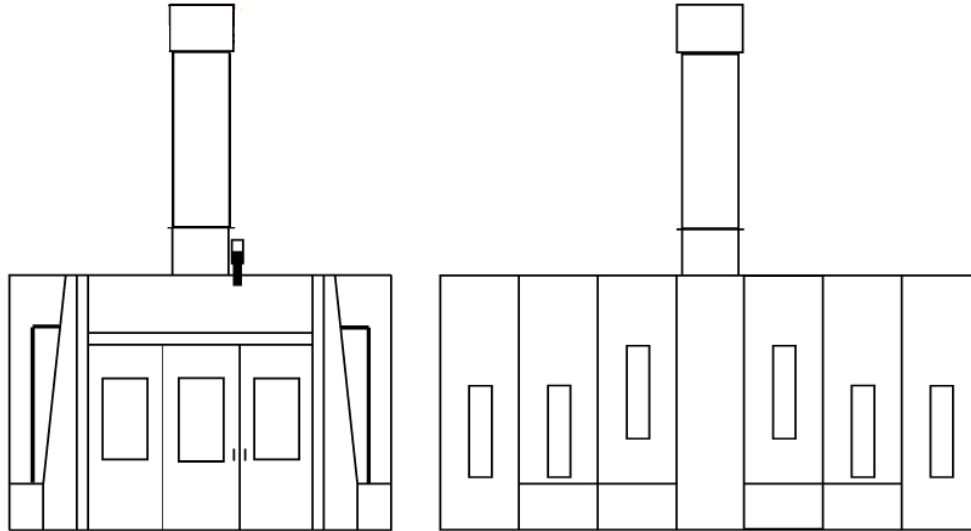
GIVENS SIDE EXHAUST DOWNDRAFT PAINT SPRAY BOOTH

EXHAUST STACK: Roof flashing, Combination Automatic Damper and Weather Canopy are included in the price of your Givens Side Exhaust Downdraft Paint Spray Booth.

DELIVERY & MECHANICAL INSTALLATION:

Performed by GIVCO. INC., is included in the price of your

Givens Booth. The only additional expenses to your shop are the plumbing of compressed air, installation of an automatic fire extinguishing system, and the connection of electrical power to the lights and exhaust fan.



Booth Clearance 3'0" All Around Recommended

Booth Model Number	Work Dimensions			Overall Dimensions			Nominal Door Openings		Shpg. Weight
	Width	Height	Length	Width	Height	Length	Width	Height	
ST1900	14'0"	9'0"	24'0"	17'0"	11'0"	24'5"	10'0"	8'0"	5600
ST1928	14'0"	9'0"	28'0"	17'0"	11'0"	28'5"	10'0"	8'0"	6100

STANDARD EQUIPMENT FURNISHED

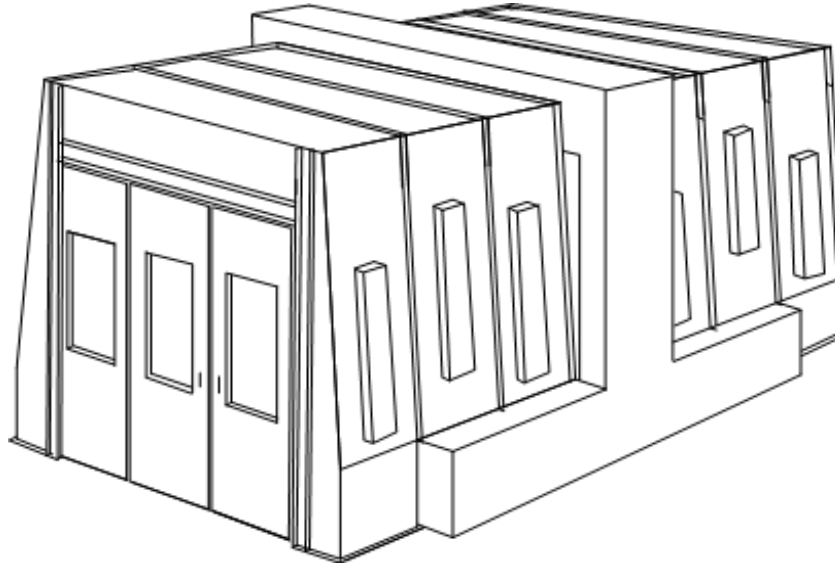
- | | |
|---|---|
| (1) Draft Gauge | (8) Canopy |
| (2) Double Ring Exhaust Fan powered by a 3 phase Totally enclosed fan cooled electric motor. | (9) One complete set of Series 55 prefilters and Ceiling filters |
| (3) Twelve 160 watt 48" sealed Fluorescent Light fixtures shining through 1/4" clear tempered glass | (10) Extra Change of 22 gram Extra Heavy Duty Exhaust Filter Media |
| (4) Two 4'0' lengths of Exhaust Stack | (11) Personal Access Door is a part of the front doors of the paint spray booth |
| (5) Roof Flashing either pitched or flat | (12) All Nuts, Bolts and Mounting Hardware |
| (6) Three Observation Windows located in the Doors of the paint booth | (12) Delivery, Mechanical Installation and Initial Start Up by GIVCO, INC. |
| (7) Combination Automatic Damper & Weather | |

OPTIONS AVAILABLE AT EXTRA COST

- | | |
|---|--|
| (1) Additional Light Fixtures | (8) Special length, width, and height booths available |
| (2) Additional Observation Windows | (9) Paint Mixing Rooms |
| (3) Fluorescent Light Tubes | (10) Prep Stations |
| (4) Motor Starters | (11) Trim Out Booths |
| (5) Single Phase Motors | (12) Safety Control Devices available. Consult local codes and GIVCO, INC. for the equipment appropriate for your shop |
| (6) Spray Cure Systems with Auto Balance | |
| (7) A 2'6"x6'8" personal access door | |

GIVENS SIDE EXHAUST DOWNDRAFT PAINT SPRAY BOOTH

Givens Side Exhaust Downdraft Paint Spray Booths are designed to give many years of trouble-free service. This style booth will produce a much cleaner paint job than a negative pressure booth, because an air intake fan pushes the incoming air into the pre-filters which are located on the side in the top air inlet plenum. The incoming air is filtered a second time through four R-1 48" x 108" filters located in the ceiling at the front of the booth. This filtered air then passes over the top of the vehicle being painted and is exhausted through the exhaust filters located in the bottom of the exhaust plenums on either side of the booth. Givens Side Exhaust Downdraft Paint Spray Booths and components conform to Occupational Safety and Health Administration (OSHA) standards, T.N.R.C.C. regulations and NFPA code 33 for construction and function.



This *Givens* Side Exhaust Downdraft booth contains these important features:

CONSTRUCTION: American-made mill galvanized steel preformed with 2" X 1" companion flanges and holes punched on six inch centers.

- (1) 12 *United States Wire Gauge* floor channels, since this is the foundation of the spray booth and the first area of deterioration.
- (2) 10 *United States Wire Gauge* door frames and reinforcing beams to insure that the Givens Booth will stand squarely for many years to come.
- (3) 18 *United States Wire Gauge* wall and roof panels constituting a two-hour fire wall.
- (4) Double 18 *United States Wire Gauge* doors constituting a four-hour fire wall.

Air Filtration: All air filters are Series 55 Rated Tight Seal Tacky carrying a UL Class 2 approval.

Replacements are available from your paint supplier.

- (1) The four each 52" x 112" AFR-1 air filters located in the ceiling cut the air velocity by one third, making it three times as efficient as a cross flow booth with one third the filter area.
- (2) The 13 pre-filters located on the top of the air

intake plenum double filter the incoming air before it reaches the vehicle being painted. They also help the four each 52" x 112" AFR-1 ceiling filters to last six to twelve times longer, thus saving money over the years.

Exhaust Filtration: Fiberglass Exhaust filters 22 gram Extra Heavy Duty 2 ½" thick 20" x 400" (Factory Mutual approved, UL class 2 Listing) insures that more than 96.5% of the over spray particles are trapped. This filter is located at the bottom of the exhaust plenums on either side of the paint spray booth.

Lighting: The 15 sealed 128-watt, T-8 fluorescent light fixtures provided with every Givens Side Exhaust Downdraft Booth are designed for maximum illumination inside the booth. Sealed light fixtures have no dust build up to block light inside the booth. Additional fixtures are available at extra cost.

Doors: Doors are double walled with tempered glass observation windows. All doors are positively sealed with the use of urethane weather stripping.

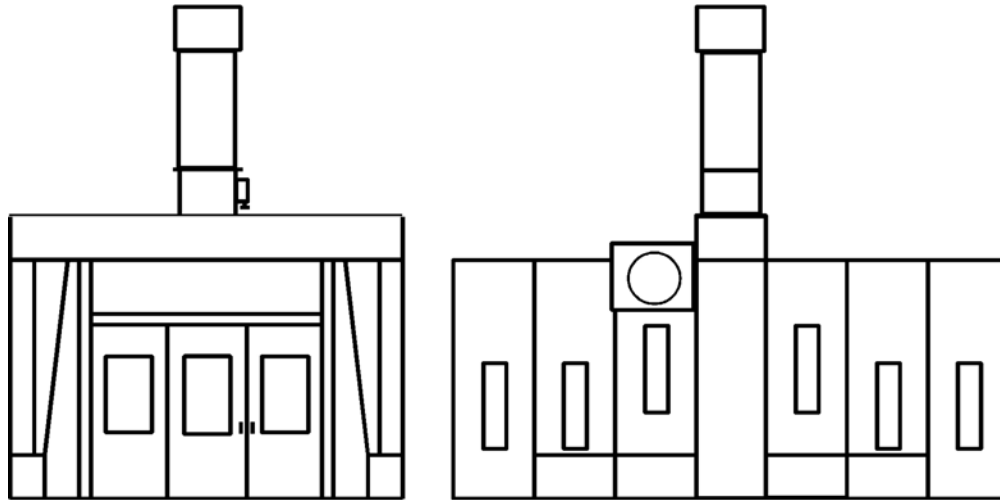
GIVENS SIDE EXHAUST DOWNDRAFT PAINT SPRAY BOOTH

EXHAUST STACK: Roof flashing, Combination Automatic Damper and Weather Canopy are included in the price of your Givens Side Exhaust Downdraft Paint Spray Booth.

DELIVERY & MECHANICAL INSTALLATION:

Performed by GIVCO. INC., is included in the price of

your Givens Booth. The only additional expenses to your shop are the plumbing of compressed air, installation of an automatic fire extinguishing system, and the connection of electrical power to the lights and exhaust fan.



Booth Clearance 3'0" All Around Recommended

Booth Model Number	Work Dimensions			Overall Dimensions			Nominal Door Openings		Shpg. Weight Lbs.
	Width	Height	Length	Width	Height	Length	Width	Height	
ST1900	14'0"	9'0"	24'0"	17'0"	11'0"	24'5"	10'0"	8'0"	5600
ST1928	14'0"	9'0"	28'0"	17'0"	11'0"	28'5"	10'0"	8'0"	6100

STANDARD EQUIPMENT FURNISHED

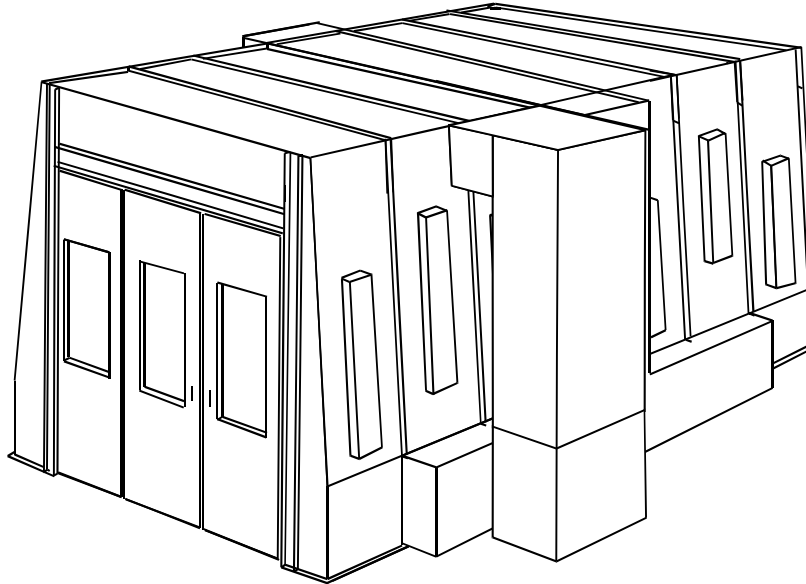
- | | |
|---|--|
| <ul style="list-style-type: none"> (1) Draft Gauge (2) Double Ring Exhaust Fan powered by a 3 phase totally enclosed fan cooled electric motor (3) Twelve 160 watt 48" sealed Fluorescent Light Fixtures shining through 1/4" tempered glass (4) Two 4'0' lengths of Exhaust Stack (5) Roof Flashing either pitched or flat (6) Three Observation Windows located in the Doors of the paint booth (7) Combination Automatic Damper & Weather | <ul style="list-style-type: none"> Canopy (8) One complete set of Series 55 prefilters and Ceiling filters (9) Extra Change of 22 gram Extra Heavy Duty Exhaust Filter Media (10) Personal Access Door is a part of the front doors of the paint spray booth (11) All Nuts, Bolts and Mounting Hardware (12) Delivery, Mechanical Installation and Initial Start Up by GIVCO, INC. |
|---|--|

OPTIONS AVAILABLE AT EXTRA COST

- | | |
|--|--|
| <ul style="list-style-type: none"> (1) Additional Light Fixtures (2) Additional Observation Windows (3) Fluorescent Light Tubes (4) Motor Starters (5) Single Phase Motors (6) Spray Cure Systems with Auto Balance (7) A 2'6"x6'8" personal access door | <ul style="list-style-type: none"> (8) Special length, width, and height booths (9) Paint Mixing Rooms (10) Prep Stations (11) Trim Out Booths (12) Safety Control Devices available. Consult Local codes And GIVCO, INC. for the equipment appropriate for your shop |
|--|--|

GIVENS SPRAY TEC SIDE EXHAUST DOWNDRAFT PAINT SPRAY BOOTH

Givens Downdraft Paint Spray Booths are designed to give many years of trouble-free service. Since this booth is pitted, the air flow coming from the ceiling has a wrap around effect on the vehicle, then is exhausted through the pit in the floor. This means cleaner paint jobs with the painter being exposed to the least amount of hazardous materials of any other booth style. Givens Downdraft Paint Spray Booths and components conform to Occupational Safety and Health Administration (OSHA) standards, T.N.R.C.C. regulations and NFPA code 33 for construction and function.



This *Givens* Side Exhaust Downdraft booth contains these important features:

THE SPRAY CURE SYSTEM: This system brings the incoming air in by use of an air intake fan, at a slightly greater amount than what is discharged; hence opening and closing of an access door will not effect the cleanliness of a paint job. This balance of air is controlled by our *auto balance* feature which automatically and continuously senses the static pressure inside the booth and electronically controls a damper which keeps the air flow balanced. Another benefit of *auto balance* is it enables the exhaust filter to be used for a longer period of time before changing. The heating unit used is direct gas fired which is 100% efficient and has the capacity of a 90F rise over the ambient temperature of the air outside. This unit can be ordered to fire on butane, natural gas or both fuel sources. This heater complies with all government regulations. The Spray Cure System has a state of the art remote control panel which will perform the following functions:

- (1) Ability to spray paint with or without heat. With heat controlled from an adjustable thermostat 60-90 degrees.
- (2) After painting the booth can be purged with or without heat controlled from a 60-90 degree

thermostat, and with a 0-60 minute timer.

(3) When the purge cycle is completed automatically the cure cycle begins controlled by a 0-60 minute timer and a 95-140 degree thermostat. During this operation the air flow of the booth is cut by approximately 50% hence cutting the consumption of gas by the same percentage, however the temperature rise capability almost doubles compared to the spray position.

(4) When the cure cycle is completed automatically the cool down cycle begins controlled by a 0-60 minute timer. With or without heat controlled by a 60-95 degree thermostat.

(5) When the cool down cycle is completed the unit automatically shuts off.

(6) All the timers stay automatically set so the only time they need to be adjusted is when a particular painting operation requires a different time period. The same applies to the thermostats. The remote control panel also has an L.E.D. thermometer which shows the temperature inside the paint spray booth. It is easy to see the spray cure system is user friendly and will increase your Givens Paint Booth production on a cool day by at least 100% or on a warm day by 50%. At all times cars can be assembled the same day they are painted and then delivered.

GIVENS Spray Tec Side Exhaust Downdraft Paint Spray Booth

Construction: American-made mill galvanized steel preformed with 2" X 1" companion flanges and holes punched on six inch centers.

(1) 12 United States Wire Gauge floor channels, since this is the foundation of the spray booth and the first area of deterioration.

(2) 10 United States Wire Gauge door frames and reinforcing beams to insure that the Givens Booth will stand squarely for many years to come.

(3) 18 United States Wire Gauge wall and roof panels constituting a two-hour fire wall.

(4) Double 18 United States Wire Gauge doors constituting a four-hour fire wall.

Air Filtration: All air filters are AFR-1 Rated Tight Seal Tacky carrying a UL Class 2 approval.

Replacements are available from your paint supplier.

(1) The four each 48" x 100" R-1 air filters located in the ceiling cut air velocity by one-third, making it three times as efficient as a cross flow booth with one-third the filter area.

(2) The 14 pre-filters located in the side of the air intake plenum double filter the incoming air before it reaches the vehicle being painted. They also help the four each 48" x 100" R-1 ceiling filters to last six to twelve times longer, thus saving money over the years.

Exhaust Filtration: Fiberglass Exhaust filters 22

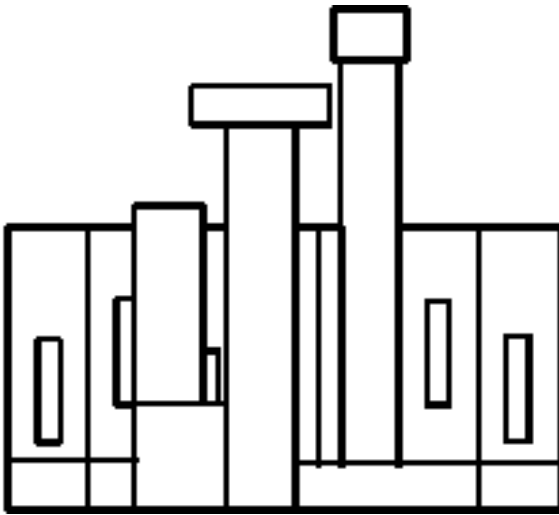
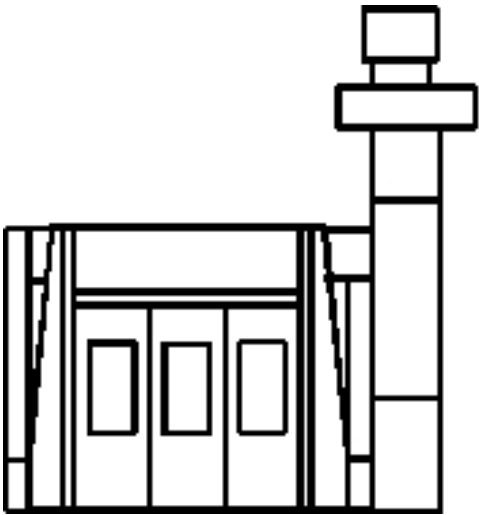
gram Extra Heavy Duty 2 ½" thick 41" x 168" (Factory Mutual approved, UL class 2 Listing) insures that more than 96.5% of the over spray particles are trapped. Having this extra large filter area, the frequency of filter change is cut to a minimum. This filter is located at the top of the pit (Note: Pit is not provided by Givco, Inc. immediately under the floor grate.

Lighting: The 14 sealed 160-watt fluorescent light fixtures provided with every Givens Downdraft Booth are designed for maximum illumination. Sealed light fixtures have no dust build up to block light inside the booth. Additional fixtures are available at extra cost.

Doors: Doors are double walled with tempered glass observation windows. All doors are positively sealed with the use of urethane weather stripping.

Exhaust Stack: Roof Flashing, Combination Automatic Damper and Weather Canopy are included in the price of your Givens Downdraft Paint Spray Booth.

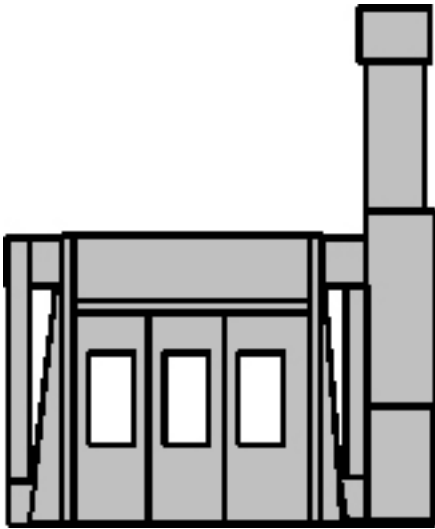
Delivery & Mechanical Installation: Performed by GIVCO, INC., is included in the price of your Givens Booth. The only additional expenses to your shop are the plumbing of compressed air, gas, installation of an automatic fire extinguishing system, construction of the exhaust pit, and the connection of electrical power to the lights, exhaust fan and heated air make-up unit



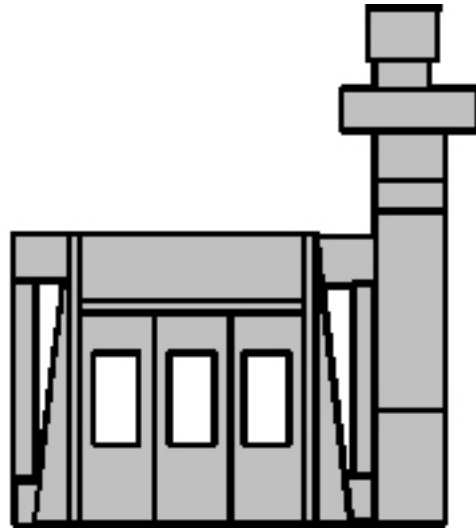
Booth Clearance 3'0" All Around Recommended

Booth Model Number	Work Dimensions			Overall Dimensions			Nominal Door Openings		Shpg. Weight
	Width	Height	Length	Width	Height	Length	Width	Height	
ST1900	14'0"	9'0"	24'0"	18'5"	11'3"	24'6"	10'0"	8'0"	6100
ST1928	14'0"	9'0"	28'0"	18'5"	11'3"	28'6"	10'0"	8'0"	6600

GIVENS Spray Tec Side Exhaust Downdraft Paint Spray Booth



ST-1900-1



ST-1900-2

The ST-1900-1 IS A COST EFFECTIVE ANSWER WHEN THE BOOTH CAN BE INSTALLED NEXT TO AN EXTERIOR WALL SO THE SPRAY CURE UNIT CAN BE PLACED OUTSIDE OR IN A BUILDING OR ROOM WHOSE SHOP AIR IS ALMOST AS CLEAN AS THE AIR OUTSIDE. OTHERWISE THE ST2000-2 IS THE RIGHT ANSWER.

STANDARD EQUIPMENT FURNISHED

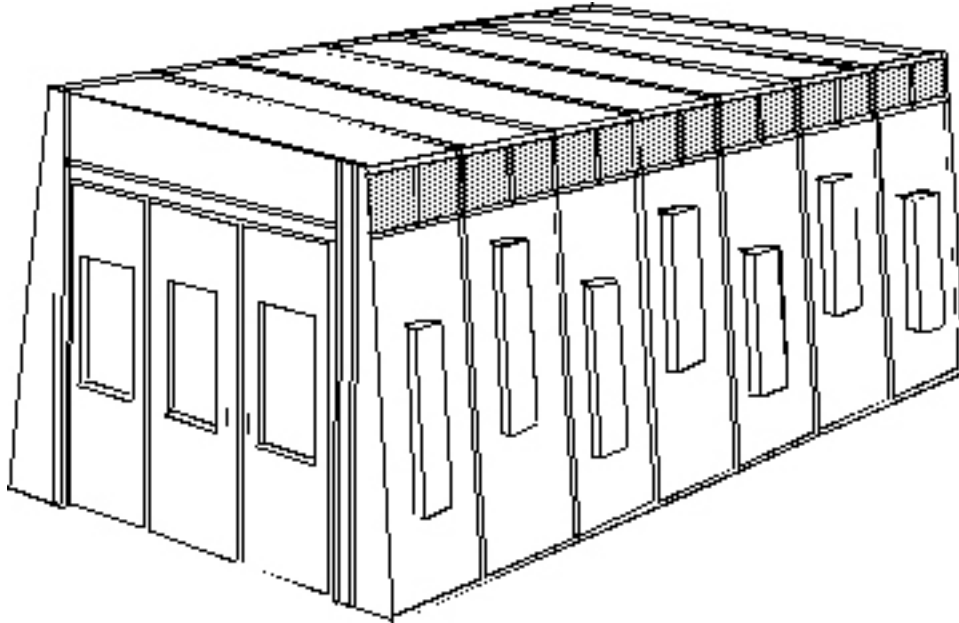
- | | |
|---|---|
| (1) Draft Gauge | (8) Combination Automatic Damper and Weather Canopy |
| (2) Double Ring Exhaust Fan powered by a 3 phase Totally enclosed fan cooled electric motor | (9) One complete set of Series 55 prefilters and R-1 Ceiling filters |
| (3) Fourteen 160 watt 48" sealed Fluorescent Light Fixtures for Class I Division II locations shining through 1/4" tempered glass | (10) Extra Change of 22 gram Extra Heavy Duty Exhaust Filter Media |
| (4) Five 4'0" lengths of Exhaust Stack | (11) The Personal Access Door Is Incorporated In The Front Doors Of The Paint Spray Booth |
| (5) Roof Flashing either pitched or flat | (12) All Nuts, Bolts and Mounting Hardware |
| (6) Three Observation Windows located in the Doors of the paint booth | (13) Delivery, Mechanical Installation and Initial Start Up by GIVCO, INC. |
| (7) Spray cure heated air make-up unit with AUTO BALANCE | |

OPTIONS AVAILABLE AT EXTRA COST

- | | |
|--|--|
| (1) Additional Light Fixtures | (9) Drying Room enclosures |
| (2) Additional Observation Windows | (10) Paint Mixing Rooms |
| (3) Fluorescent Light Tubes | (11) Prep Stations |
| (4) Motor Starters | (12) Trim Out Booths |
| (5) Single Phase Motors | (13) Safety Control Devices available. Consult Local codes And GIVCO, INC. for the equipment appropriate for your shop |
| (6) Drive Through Option | |
| (7) Special length, width, and height booths available | |
| (8) Raised floor Downdraft Booths | |

GIVENS SPRAY TEC DOWNDRAFT PAINT SPRAY BOOTH

Givens Downdraft Paint Spray Booths are designed to give many years of trouble-free service. Since this booth is pitted, the air flow coming from the ceiling has a wrap around effect on the vehicle, then is exhausted through the pit in the floor. This means cleaner paint jobs with the painter being exposed to the least amount of hazardous materials of any other booth style. Givens Downdraft Paint Spray Booths and components conform to Occupational Safety and Health Administration (OSHA) standards, T.N.R.C.C. regulations and NFPA code 33 for construction and function.



ST-2000

*All of the **Givens** Downdraft booths contain these important features:*

CONSTRUCTION: American-made mill galvanized steel preformed with 2" X 1" companion flanges and holes punched on six inch centers.

- (1) 12 *United States Wire Gauge* floor channels, since this is the foundation of the spray booth and the first area of deterioration.
- (2) 10 *United States Wire Gauge* door frames and reinforcing beams to insure that the Givens Booth will stand squarely for many years to come.
- (3) 18 *United States Wire Gauge* wall and roof panels constituting a two-hour fire wall.
- (4) Double 18 *United States Wire Gauge* doors constituting a four-hour fire wall.

Air Filtration: All air filters are AFR-1 Rated Tight Seal Tacky carrying a UL Class 2 approval. Replacements are available from your paint supplier.

- (1) The four each 48" x 100" R-1 air filters located in the ceiling cut air velocity by one-third, making it three times as efficient as a cross flow booth with one-third the filter area.
- (2) The 14 pre-filters located in the side of the air intake plenum double filter the incoming air

before it reaches the vehicle being painted. They also help the four each 48" x 100" R-1 ceiling filters to last six to twelve times longer, thus saving money over the years.

Exhaust Filtration: Fiberglass Exhaust filters 22 gram Extra Heavy Duty 2 ½" thick 41" x 168" (Factory Mutual approved, UL class 2 Listing) insures that more than 96.5% of the over spray particles are trapped. Having this extra large filter area, the frequency of filter change is cut to a minimum. This filter is located at the top of the pit (Note: Pit is not provided by Givco, Inc. immediately under the floor grate.

Lighting: The 14 sealed 160-watt fluorescent light fixtures provided with every Givens Downdraft Booth are designed for maximum illumination. Sealed light fixtures have no dust build up to block light inside the booth. Additional fixtures are available at extra cost.

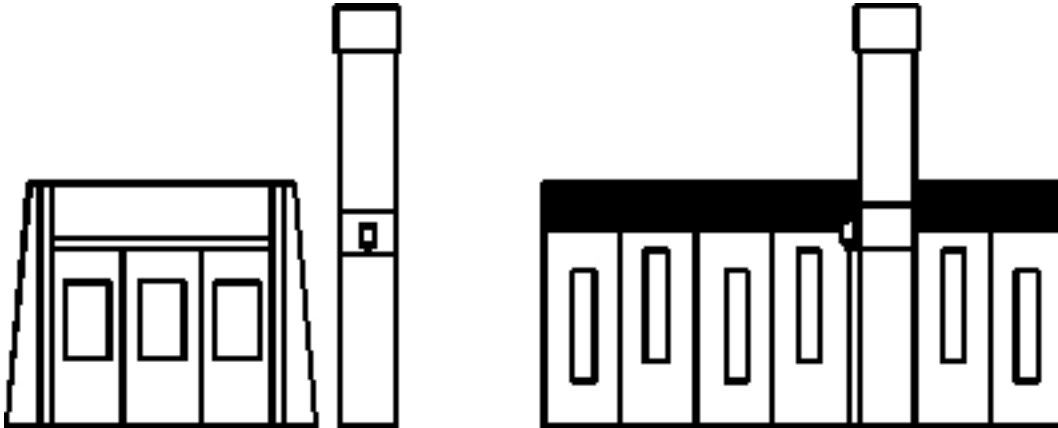
Doors: Doors are double walled with tempered glass observation windows. All doors are positively sealed with the use of urethane weather stripping.

GIVENS SPRAY TEC DOWNDRAFT PAINT SPRAY BOOTH

EXHAUST STACK: Roof flashing, Combination Automatic Damper and Weather Canopy are included in the price of your Givens Downdraft Paint Spray Booth.

DELIVERY & MECHANICAL INSTALLATION: Performed by GIVCO. INC., is included in the price

of your Givens Booth. The only additional expenses to your shop are the plumbing of compressed air, installation of an automatic fire extinguishing system, construction of the exhaust pit, and the connection of electrical power to the lights and exhaust fan.



Booth Clearance 3'0" All Around Recommended

Booth Model Number	Work Dimensions			Overall Dimensions			Nominal Door Openings		Shpg. Weight Lbs.
	Width	Height	Length	Width	Height	Length	Width	Height	
ST2000	14'0"	9'0"	24'0"	14'5"	11'3"	24'6"	10'0"	8'0"	6100
ST2028	14'0"	9'0"	28'0"	14'5"	11'3"	28'6"	10'0"	8'0"	6600

STANDARD EQUIPMENT FURNISHED

- | | |
|---|--|
| (1) Draft Gauge | (7) Combination Automatic Damper and Weather Canopy |
| (2) Double Ring Exhaust Fan powered by a 3 phase Totally enclosed fan cooled electric motor | (8) One complete set of Series 55 prefilters and R-1 Ceiling filters |
| (3) Fourteen 160 watt 48" sealed Fluorescent Light Fixtures for Class I Division II locations shining through 1/4" tempered glass | (9) Extra Change of 22 gram Extra Heavy Duty Exhaust Filter Media |
| (4) Five 4'0' lengths of Exhaust Stack. | (10) One 2'6" X 6'8" Personal Access Door |
| (5) Roof Flashing either pitched or flat | (11) All Nuts, Bolts and Mounting Hardware |
| (6) Three Observation Windows located in the Doors of the paint booth | (12) Delivery, Mechanical Installation and Initial Start Up by GIVCO, INC. |

OPTIONS AVAILABLE AT EXTRA COST

- | | |
|--|--|
| (1) Additional Light Fixtures | (8) Drying Room enclosures |
| (2) Add Observation Windows | (9) Paint Mixing Rooms |
| (3) Fluorescent Light Tubes | (10) Prep Stations |
| (4) Motor Starters and Single Phase Motors | (11) Trim Out Booths |
| (5) Spray Cure Systems with Auto Balance | (12) Safety Control Devices available. Consult Local codes And GIVCO, INC. for the equipment appropriate for your shop |
| (6) Special length, width, and height booths available | |
| (7) Raised floor Downdraft Booths | |

GIVENS *SPRAY TEC DOWNDRAFT PAINT SPRAY BOOTH*

ST-2028 PITTED DOWNDRAFT BOOTH



FRONT OUTSIDE



FRONT INSIDE



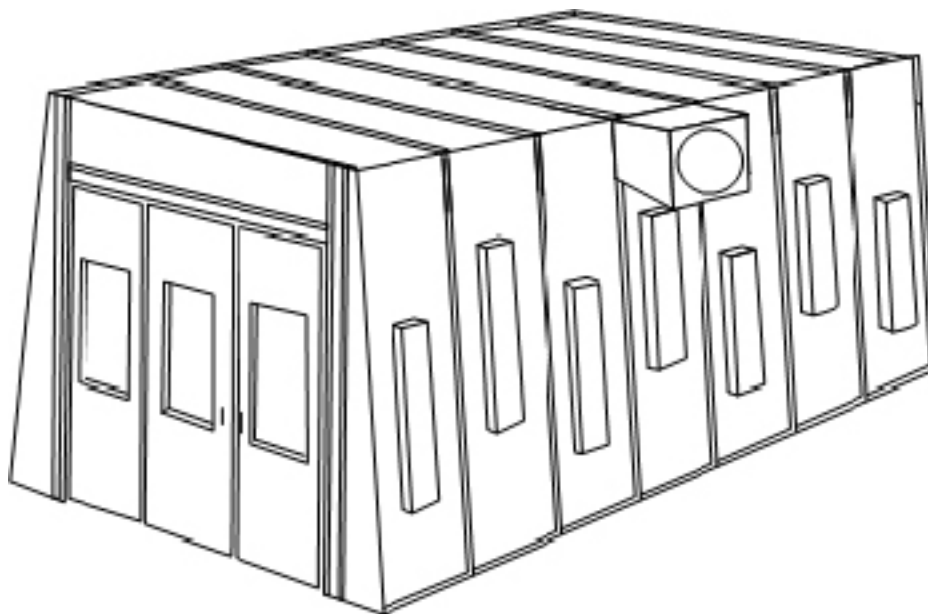
LEFT SIDE



RIGHT SIDE

GIVENS PRESSURIZED DOWNDRAFT PAINT SPRAY BOOTH

Givens Pressurized Downdraft Paint Spray Booths are designed to give many years of trouble-free service. This style booth will produce a much cleaner paint job than a negative pressure booth, because an air intake fan pushes the incoming air into the pre-filters which are located on the side in the top air inlet plenum. The incoming air is filtered a second time through four R-1 48" x 108" filters located in the ceiling at the front of the booth. Because this booth is pitted, the air flow coming from the ceiling has a wrap around effect on the vehicle, then is exhausted through the pit in the floor. This means cleaner paint jobs with the painter being exposed to the least amount of hazardous materials of any other booth style. The balance of air is controlled by a balancing damper. Givens Downdraft Paint Spray Booths and components conform to Occupational Safety and Health Administration (OSHA) standards, T.N.R.C.C. regulations and NFPA code 33 for construction and function.



All of the *Givens* Downdraft booths contain these important features:

CONSTRUCTION: American-made mill galvanized steel preformed with 2" X 1" companion flanges and holes punched on six inch centers.

(1) 12 *United States Wire Gauge* floor channels, since this is the foundation of the spray booth and the first area of deterioration.

(2) 10 *United States Wire Gauge* door frames and reinforcing beams to insure that the Givens Booth will stand squarely for many years to come.

(3) 18 *United States Wire Gauge* wall and roof panels constituting a two-hour fire wall.

(4) Double 18 *United States Wire Gauge* doors constituting a four-hour fire wall.

Air Filtration: All air filters are AFR-1 Rated Tight Seal Tacky carrying a UL Class 2 approval. Replacements are available from your paint supplier.

(1) The four each 48" x 100" R-1 air filters located in the ceiling cut air velocity by one-third, making it three times as efficient as a cross flow booth with one-third the filter area.

(2) The 14 pre-filters located in the side of the air intake plenum double filter the incoming air

before it reaches the vehicle being painted. They also help the four each 48" x 100" R-1 ceiling filters to last six to twelve times longer, thus saving money over the years.

Exhaust Filtration: Fiberglass Exhaust filters 22 gram Extra Heavy Duty 2 ½" thick 41" x 168" (Factory Mutual approved, UL class 2 Listing) insures that more than 96.5% of the over spray particles are trapped. Having this extra large filter area, the frequency of filter change is cut to a minimum. This filter is located at the top of the pit (Note: Pit is not provided by Givco, Inc. immediately under the floor grate.

Lighting: The 14 sealed 160-watt fluorescent light fixtures provided with every Givens Downdraft Booth are designed for maximum illumination. Sealed light fixtures have no dust build up to block light inside the booth. Additional fixtures are available at extra cost.

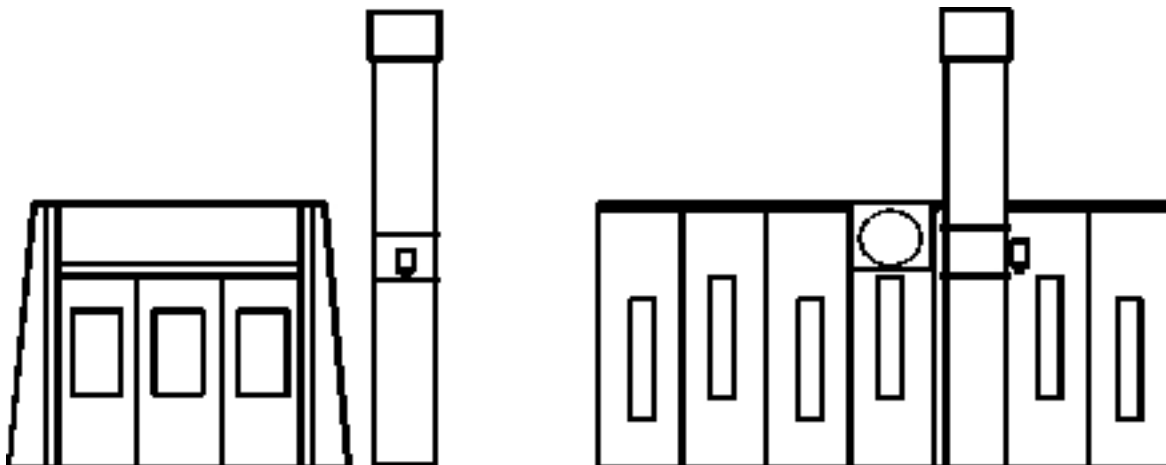
Doors: Doors are double walled with tempered glass observation windows. All doors are positively sealed with the use of urethane weather stripping.

GIVENS PRESSURIZED DOWNDRAFT PAINT SPRAY BOOTH

EXHAUST STACK: Roof flashing, Combination Automatic Damper and Weather Canopy are included in the price of your Givens Downdraft Paint Spray Booth.

DELIVERY & MECHANICAL INSTALLATION: Performed by GIVCO. INC., is included in the price

of your Givens Booth. The only additional expenses to your shop are the plumbing of compressed air, installation of an automatic fire extinguishing system, construction of the exhaust pit, and the connection of electrical power to the lights and exhaust fan.



Booth Clearance 3'0" All Around Recommended

Booth Model Number	Work Dimensions			Overall Dimensions			Nominal Door Openings		Shpg. Weight Lbs.
	Width	Height	Length	Width	Height	Length	Width	Height	
ST2000	14'0"	9'0"	24'0"	14'5"	11'3"	24'6"	10'0"	8'0"	6100
ST2028	14'0"	9'0"	28'0"	14'5"	11'3"	28'6"	10'0"	8'0"	6600

STANDARD EQUIPMENT FURNISHED

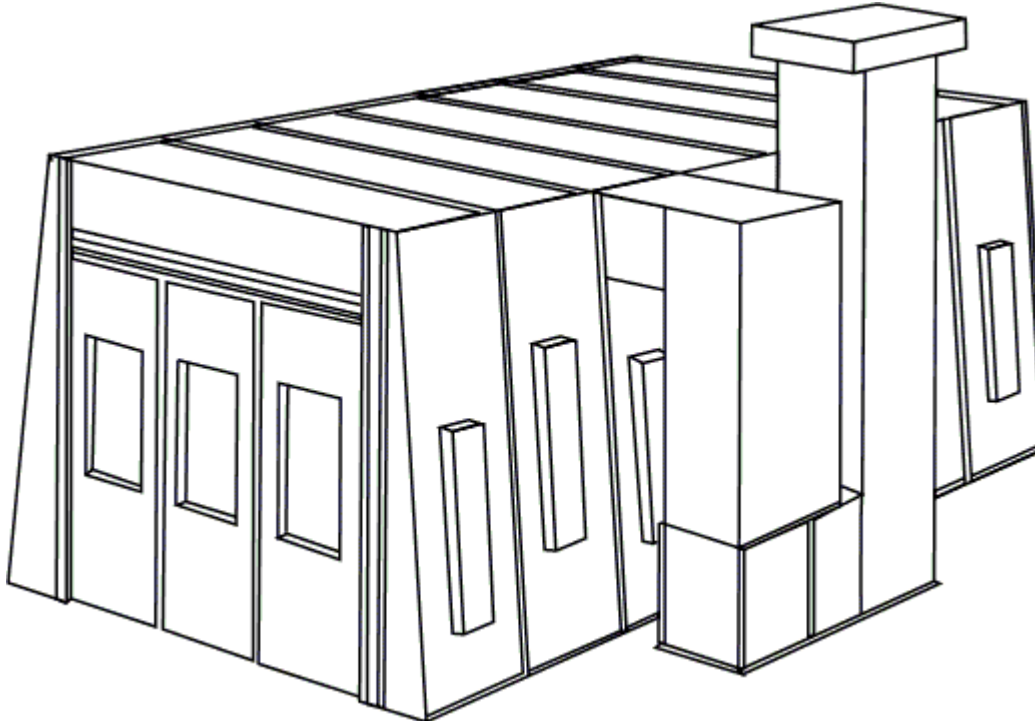
- | | |
|---|--|
| (1) Draft Gauge | (7) Combination Automatic Damper and Weather Canopy |
| (2) Double Ring Exhaust Fan powered by a 3 phase Totally enclosed fan cooled electric motor | (8) One complete set of Series 55 prefilters and R-1 Ceiling filters |
| (3) Fourteen 160 watt 48" sealed Fluorescent Light Fixtures for Class I Division II locations shining through 1/4" tempered glass | (9) Extra Change of 22 gram Extra Heavy Duty Exhaust Filter Media |
| (4) Five 4'0' lengths of Exhaust Stack. | (10) One 2'6" X 6'8" Personal Access Door |
| (5) Roof Flashing either pitched or flat | (11) All Nuts, Bolts and Mounting Hardware |
| (6) Three Observation Windows located in the Doors of the paint booth | (12) Delivery, Mechanical Installation and Initial Start Up by GIVCO, INC. |

OPTIONS AVAILABLE AT EXTRA COST

- | | |
|--|--|
| (1) Additional Light Fixtures | (8) Drying Room enclosures |
| (2) Add Observation Windows | (9) Paint Mixing Rooms |
| (3) Fluorescent Light Tubes | (10) Prep Stations |
| (4) Motor Starters and Single Phase Motors | (11) Trim Out Booths |
| (5) Spray Cure Systems with Auto Balance | (12) Safety Control Devices available. Consult Local codes And GIVCO, INC. for the equipment appropriate for your shop |
| (6) Special length, width, and height booths available | |
| (7) Raised floor Downdraft Booths | |

GIVENS SPRAY TEC DOWNDRAFT PAINT SPRAY BOOTH

Givens Downdraft Paint Spray Booths are designed to give many years of trouble-free service. Since this booth is pitted, the air flow coming from the ceiling has a wrap around effect on the vehicle, then is exhausted through the pit in the floor. This means cleaner paint jobs with the painter being exposed to the least amount OF hazardous materials of any other booth style. Givens Downdraft Paint Spray Booths and components conform to Occupational Safety and Health Administration (OSHA) standards, T.N.R.C.C. regulations and NFPA code 33 for construction and function.



This *Givens* Downdraft booth contains these important features:

THE SPRAY CURE SYSTEM: This system brings the incoming air in by use of an air intake fan, at a slightly greater amount than what is discharged; hence opening and closing of an access door will not affect the cleanliness of a paint job. This balance of air is controlled by our **auto balance** feature which automatically and continuously senses the static pressure inside the booth and electronically controls a damper which keeps the air flow balanced. Another benefit of **auto balance** is it enables the exhaust filter to be used for a longer period of time before changing. The heating unit used is direct gas fired which is 100% efficient and has the capacity of a 90F rise over the ambient temperature of the air outside. This unit can be ordered to fire on butane, natural gas or both fuel sources. This heater complies with all government regulations.

The Spray Cure System has a state of the art remote control panel which will perform the following functions:

- (1) Ability to spray paint with or without heat. With heat controlled from an adjustable thermostat 60-90 degrees.
- (2) After painting the booth can be purged with or without heat controlled from a 60-90 degree

thermostat, and with a 0-60 minute timer.

- (3) When the purge cycle is completed automatically the cure cycle begins controlled by a 0-60 minute timer and a 95-140 degree thermostat. During this operation the air flow of the booth is cut by approximately 50% hence cutting the consumption of gas by the same percentage, however the temperature rise capability almost doubles compared to the spray position.

- (4) When the cure cycle is completed automatically the cool down cycle begins controlled by a 0-60 minute timer. With or without heat controlled by a 60-95 degree thermostat.

- (5) When the cool down cycle is completed the unit automatically shuts off.

- (6) All the timers stay automatically set so the only time they need to be adjusted is when a particular painting operation requires a different time period. The same applies to the thermostats. The remote control panel also has an L.E.D. thermometer which shows the temperature inside the paint spray booth. It is easy to see the spray cure system is user friendly and will increase your Givens Paint Booth production on a cool day by at least 100% or on a warm day by 50%. At all times cars can be assembled the same day they are painted and then delivered

GIVENS SPRAY TEC DOWNDRAFT PAINT SPRAY BOOTH

Construction: American-made mill galvanized steel preformed with 2" X 1" companion flanges and holes punched on six inch centers.

(1) 12 United States Wire Gauge floor channels, since this is the foundation of the spray booth and the first area of deterioration.

(2) 10 United States Wire Gauge door frames and reinforcing beams to insure that the Givens Booth will stand squarely for many years to come.

(3) 18 United States Wire Gauge wall and roof panels constituting a two-hour fire wall.

(4) Double 18 United States Wire Gauge doors constituting a four-hour fire wall.

Air Filtration: All air filters are AFR-1 Rated Tight Seal Tacky carrying a UL Class 2 approval. Replacements are available from your paint supplier.

(1) The four each 48" x 100" R-1 air filters located in the ceiling cut air velocity by one-third, making it three times as efficient as a cross flow booth with one-third the filter area.

(2) The 14 pre-filters located in the side of the air intake plenum double filter the incoming air before it reaches the vehicle being painted. They also help the four each 48" x 100" R-1 ceiling filters to last six to twelve times longer, thus saving money over the years.

Exhaust Filtration: Fiberglass Exhaust filters 22

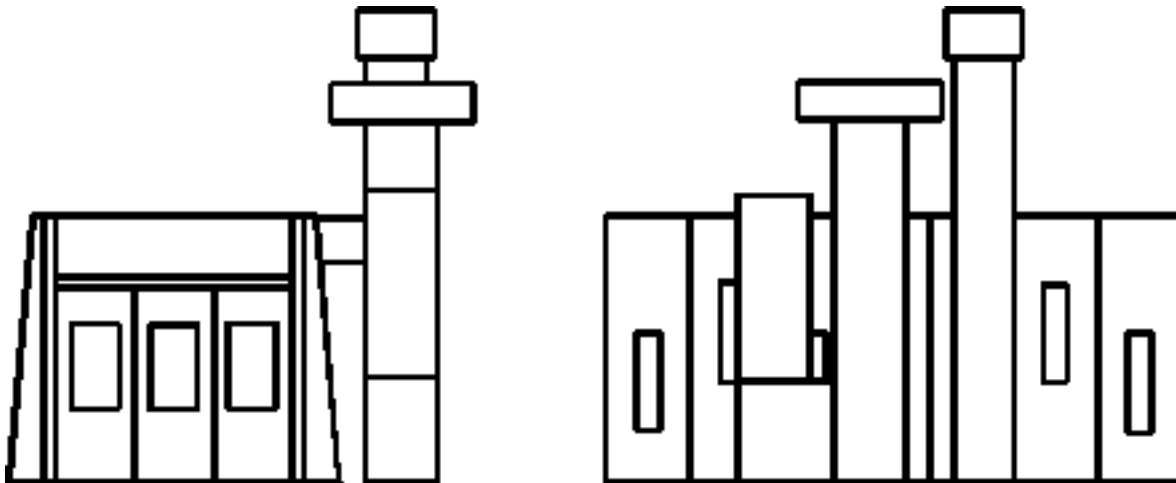
gram Extra Heavy Duty 2 ½" thick 41" x 168" (Factory Mutual approved, UL class 2 Listing) insures that more than 96.5% of the over spray particles are trapped. Having this extra large filter area, the frequency of filter change is cut to a minimum. This filter is located at the top of the pit (Note: Pit is not provided by Givco, Inc. immediately under the floor grate.

Lighting: The 14 sealed 160-watt fluorescent light fixtures provided with every Givens Downdraft Booth are designed for maximum illumination. Sealed light fixtures have no dust build up to block light inside the booth. Additional fixtures are available at extra cost.

Doors: Doors are double walled with tempered glass observation windows. All doors are positively sealed with the use of urethane weather stripping.

Exhaust Stack: Roof Flashing, Combination Automatic Damper and Weather Canopy are included in the price of your Givens Downdraft Paint Spray Booth.

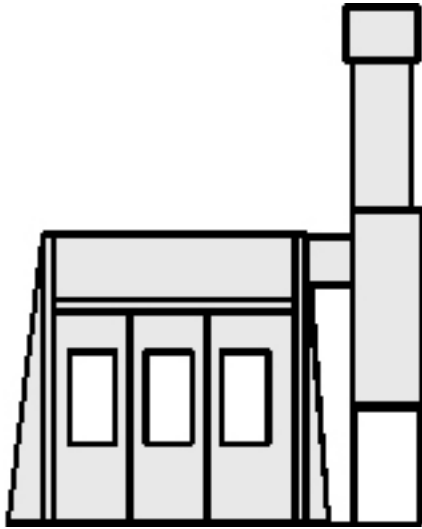
Delivery & Mechanical Installation: Performed by GIVCO, INC., is included in the price of your Givens Booth. The only additional expenses to your shop are the plumbing of compressed air, gas, installation of an automatic fire extinguishing system, construction of the exhaust pit, and the connection of electrical power to the lights, exhaust fan and heated air make-up unit



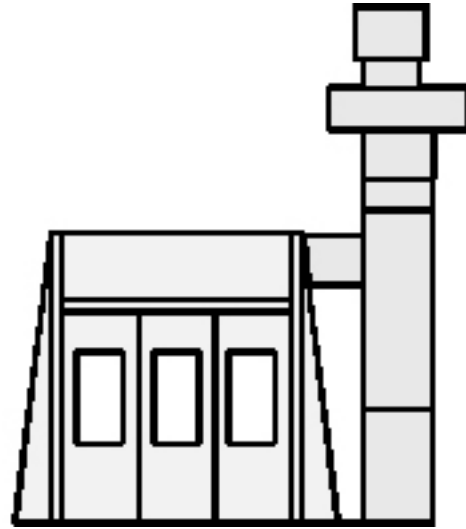
Booth Clearance 3'0" All Around Recommended

Booth Model Number	Work Dimensions			Overall Dimensions			Nominal Door Openings		Shpg. Weight
	Width	Height	Length	Width	Height	Length	Width	Height	
ST2000	14'0"	9'0"	24'0"	14'5"	11'3"	24'6"	10'0"	8'0"	6100
ST2028	14'0"	9'0"	28'0"	14'5"	11'3"	28'6"	10'0"	8'0"	6600

GIVENS SPRAY TEC DOWNDRAFT PAINT SPRAY BOOTH



ST-2000-1



ST-2000-2

THE ST-2000-1 IS A COST EFFECTIVE ANSWER WHEN THE BOOTH CAN BE INSTALLED NEXT TO AN EXTERIOR WALL SO THE SPRAY CURE UNIT CAN BE PLACED OUTSIDE OR IN A BUILDING OR ROOM WHOSE SHOP AIR IS ALMOST AS CLEAN AS THE AIR OUTSIDE. OTHERWISE THE ST2000-2 IS THE RIGHT ANSWER.

STANDARD EQUIPMENT FURNISHED

- | | |
|---|---|
| (1) Draft Gauge | (8) Combination Automatic Damper and Weather Canopy |
| (2) Double Ring Exhaust Fan powered by a 3 phase Totally enclosed fan cooled electric motor | (9) One complete set of Series 55 prefilters and R-1 Ceiling filters |
| (3) Fourteen 160 watt 48" sealed Fluorescent Light Fixtures for Class I Division II locations shining through 1/4" tempered glass | (10) Extra Change of 22 gram Extra Heavy Duty Exhaust Filter Media |
| (4) Five 4'0" lengths of Exhaust Stack | (11) The Personal Access Door Is Incorporated In The Front Doors Of The Paint Spray Booth |
| (5) Roof Flashing either pitched or flat | (12) All Nuts, Bolts and Mounting Hardware |
| (6) Three Observation Windows located in the Doors of the paint booth | (13) Delivery, Mechanical Installation and Initial Start Up by GIVCO, INC. |
| (7) Spray cure heated air make-up unit with AUTO BALANCE | |

OPTIONS AVAILABLE AT EXTRA COST

- | | |
|--|--|
| (1) Additional Light Fixtures | (9) Drying Room enclosures |
| (2) Additional Observation Windows | (10) Paint Mixing Rooms |
| (3) Fluorescent Light Tubes | (11) Prep Stations |
| (4) Motor Starters | (12) Trim Out Booths |
| (5) Single Phase Motors | (13) Safety Control Devices available. Consult Local codes And GIVCO, INC. for the equipment appropriate for your shop |
| (6) Drive Through Option | |
| (7) Special length, width, and height booths available | |
| (8) Raised floor Downdraft Booths | |

GIVENS SPRAY TEC DOWNDRAFT PAINT SPRAY BOOTH

ST-2028-1 PITTED DOWNDRAFT BOOTH WITH SPRAY CURE



FRONT OUTSIDE



FRONT INSIDE



LEFT SIDE



RIGHT SIDE



REAR INSIDE



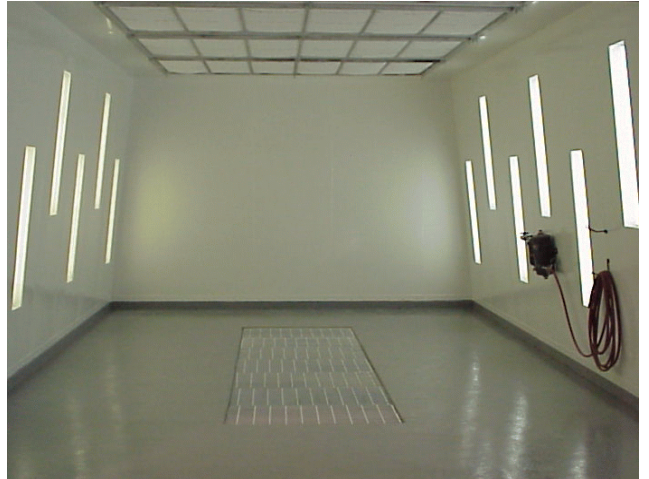
REAR OUTSIDE

GIVENS SPRAY TEC DOWNDRAFT PAINT SPRAY BOOTH

ST-2000-1 PITTED DOWNDRAFT BOOTH WITH SPRAY CURE



FRONT & SIDE



INSIDE



**SPRAY CURE
CONTROL PANEL**



**HEATER AND EXHAUST
ASSEMBLY**

GIVENS DOUBLE WALLED DOWNDRAFT PAINT SPRAY BOOTH

Givens Downdraft Paint Spray Booths are designed to give many years of trouble-free service. Since this booth is pitted, the air flow coming from the ceiling has a wrap around effect on the vehicle, then is exhausted through the pit in the floor. This means cleaner paint jobs with the painter being exposed to the least amount of hazardous materials of any other booth style. Givens Downdraft Paint Spray Booths and components conform to Occupational Safety and Health Administration (OSHA) standards, T.N.R.C.C. regulations and NFPA code 33 for construction and function.



*This **Givens** Downdraft booth contains these important features:*

THE SPRAY CURE SYSTEM: This system brings the incoming air in by use of an air intake fan, at a slightly greater amount than what is discharged; hence opening and closing of an access door will not effect the cleanliness of a paint job. This balance of air is controlled by our **auto balance** feature which automatically and continuously senses the static pressure inside the booth and electronically controls a damper which keeps the air flow balanced. Another benefit of **auto balance** is it enables the exhaust filter to be used for a longer period of time before changing. The heating unit used is direct gas fired which is 100% efficient and has the capacity of a 90F rise over the ambient temperature of the air outside. This unit can be ordered to fire on butane, natural gas or both fuel sources. This heater complies with all government regulations.

The Spray Cure System has a state of the art remote control panel which will perform the following functions:

- (1) Ability to spray paint with or without heat. With heat controlled from an adjustable thermostat 60-90 degrees.
- (2) After painting the booth can be purged with or without heat controlled from a 60-90 degree

thermostat, and with a 0-60 minute timer.

- (3) When the purge cycle is completed automatically the cure cycle begins controlled by a 0-60 minute timer and a 95-140 degree thermostat. During this operation the air flow of the booth is cut by approximately 50% hence cutting the consumption of gas by the same percentage, however the temperature rise capability almost doubles compared to the spray position.

- (4) When the cure cycle is completed automatically the cool down cycle begins controlled by a 0-60 minute timer. With or without heat controlled by a 60-95 degree thermostat.

- (5) When the cool down cycle is completed the unit automatically shuts off.

- (6) All the timers stay automatically set so the only time they need to be adjusted is when a particular painting operation requires a different time period. The same applies to the thermostats. The remote control panel also has an L.E.D. thermometer which shows the temperature inside the paint spray booth. It is easy to see the spray cure system is user friendly and will increase your Givens Paint Booth production on a cool day by at least 100% or on a warm day by 50%. At all times cars can be assembled the same day they are painted and then delivered

GIVENS DOUBLE WALLED DOWNDRAFT PAINT SPRAY BOOTH

Construction: American-made mill galvanized steel preformed with 2" X 1" companion flanges and holes punched on six inch centers.

(1) 18 United States Wire Gauge stainless steel floor channels, since this is the foundation of the spray booth and the first area of deterioration.

(2) 14 United States Wire Gauge door frames and reinforcing beams to insure that the Givens Booth will stand squarely for many years to come.

(3) 18 United States Wire Gauge roof panels, 20 United States Wire Gauge double insulated wall panels constituting a two-hour fire wall.

(4) Double 18 United States Wire Gauge doors constituting a four-hour fire wall.

Air Filtration: All air filters are AFR-1 Rated Tight Seal Tacky carrying a UL Class 2 approval. Replacements are available from your paint supplier.

(1) The four each 48" x 100" R-1 air filters located in the ceiling cut air velocity by one-third, making it three times as efficient as a cross flow booth with one-third the filter area.

(2) The 14 pre-filters located in the side of the air intake plenum double filter the incoming air before it reaches the vehicle being painted. They also help the four each 48" x 100" R-1 ceiling filters to last six to twelve times longer, thus saving money over the years.

Exhaust Filtration: Fiberglass Exhaust filters 22 gram Extra Heavy Duty 2 ½" thick 41" x 168" (Factory

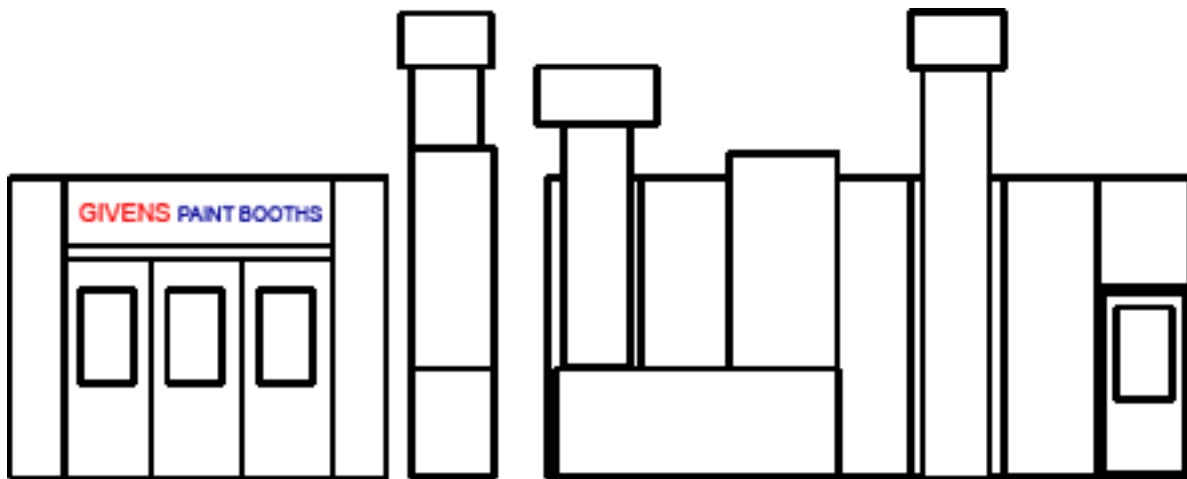
Mutual approved, UL class 2 Listing) insures that more than 96.5% of the over spray particles are trapped. Having this extra large filter area, the frequency of filter change is cut to a minimum. This filter is located at the top of the pit (Note: Pit is not provided by Givco, Inc. immediately under the floor grate.

Lighting: The 13 Inside access, vapor tight, 128 watt, T-8, fluorescent light fixtures provided with every Givens Downdraft Booth are designed for maximum illumination. Sealed light fixtures have no dust build up to block light inside the booth. Additional fixtures are available at extra cost.

Doors: Doors are double walled with tempered glass observation windows. All doors are positively sealed with the use of urethane weather stripping.

Exhaust Stack: Roof Flashing, Combination Automatic Damper and Weather Canopy are included in the price of your Givens Downdraft Paint Spray Booth.

Delivery & Mechanical Installation: Performed by Givens Paint Spray Booths, Inc., is included in the price of your Givens Booth. The only additional expenses to your shop are the plumbing of compressed air, gas, installation of an automatic fire extinguishing system, construction of the exhaust pit, and the connection of electrical power to the lights, exhaust fan and heated air make-up unit.



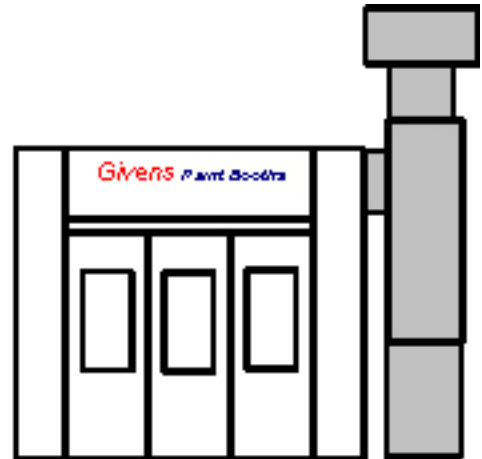
Booth Clearance 3'0" All Around Recommended

Booth Model Number	Work Dimensions			Overall Dimensions			Nominal Door Openings		Shpg. Weight
	Width	Height	Length	Width	Height	Length	Width	Height	
DW2000	14'0"	9'0"	24'0"	14'5"	11'3"	24'6"	10'0"	8'0"	6100
DW2028	14'0"	9'0"	28'0"	14'5"	11'3"	28'6"	10'0"	8'0"	6600

GIVENS DOUBLE WALLED DOWNDRAFT PAINT SPRAY BOOTH



DW-2000-1



DW-2000-2

DW-2000-1 IS A COST EFFECTIVE ANSWER WHEN THE BOOTH CAN BE INSTALLED NEXT TO AN EXTERIOR WALL SO THE SPRAY CURE UNIT CAN BE PLACED OUTSIDE OR IN A BUILDING OR ROOM WHOSE SHOP AIR IS ALMOST AS CLEAN AS THE AIR OUTSIDE. OTHERWISE THE DW-2000-2 IS THE RIGHT ANSWER.

STANDARD EQUIPMENT FURNISHED

- | | |
|---|---|
| (1) Draft Gauge | (8) AUTO BALANCE Combination Automatic Damper and Weather Canopy |
| (2) Double Ring Exhaust Fan powered by a 3 phase Totally enclosed fan cooled electric motor | (9) One complete set of Series 55 prefilters and R-1 Ceiling filters |
| (3) Thirteen 128 watt 48" T-8, inside access vapor tight Fluorescent Light Fixtures and two 128 watt sealed florescent light fixtures shining through 1/4" tempered glass | (10) Extra Change of 22 gram Extra Heavy Duty Exhaust Filter Media |
| (4) Five 4'0" lengths of Exhaust Stack | (11) The Personal Access Door Is Incorporated In The Front Doors Of The Paint Spray Booth |
| (5) Roof Flashing either pitched or flat | (12) All Nuts, Bolts and Mounting Hardware |
| (6) Three Observation Windows located in the Doors of the paint booth | (13) Delivery, Mechanical Installation and Initial Start Up by GIVCO, INC. |
| (7) Spray cure heated air make-up unit with | |

OPTIONS AVAILABLE AT EXTRA COST

- | | |
|--|--|
| (1) Additional Light Fixtures | (9) Drying Room enclosures |
| (2) Additional Observation Windows | (10) Paint Mixing Rooms |
| (3) Fluorescent Light Tubes | (11) Prep Stations |
| (4) Motor Starters | (12) Trim Out Booths |
| (5) Single Phase Motors | (13) Safety Control Devices available. Consult Local codes And GIVCO, INC. for the equipment appropriate for your shop |
| (6) Drive Through Option | |
| (7) Special length, width, and height booths available | |
| (8) Raised floor Downdraft Booths | |

GIVENS DOUBLE WALLED DOWNDRAFT PAINT SPRAY BOOTH



Left Front View



Right Front View



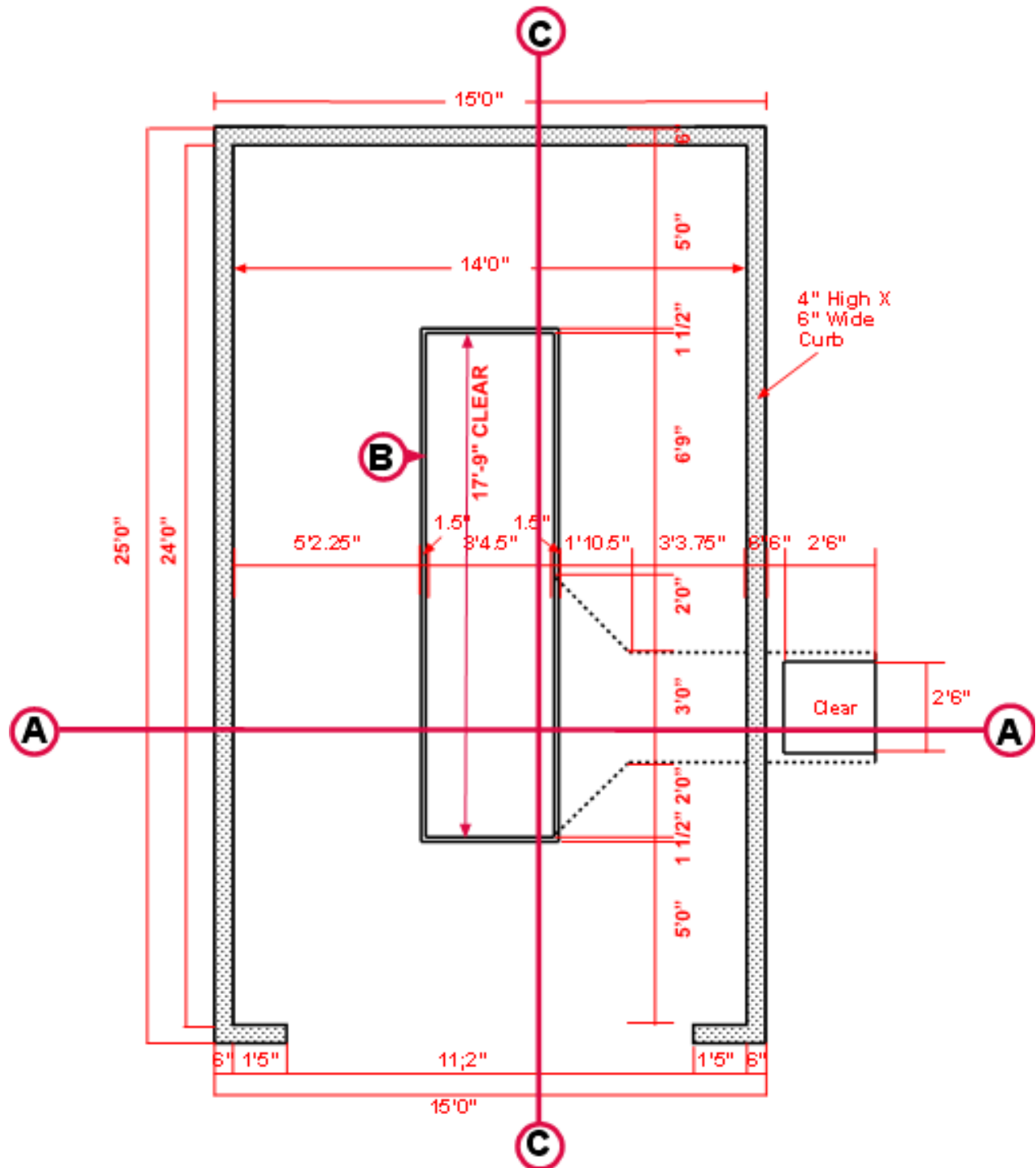
Inside Cabin View



Air Utilities View

GIVENS DOWNDRAFT PAINT SPRAY BOOTHS

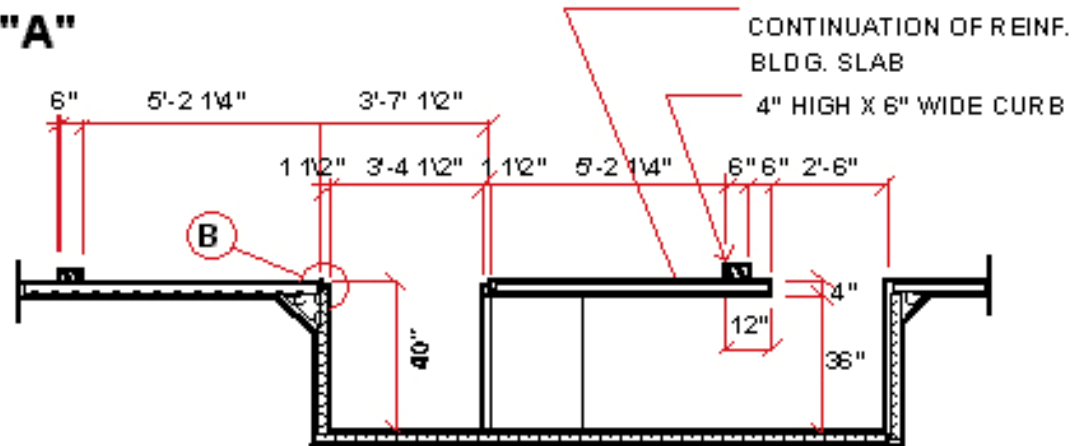
ST-2000-24 PIT DRAWING



DD-524 & ST2000 PIT DRAWING

SECTION "A"

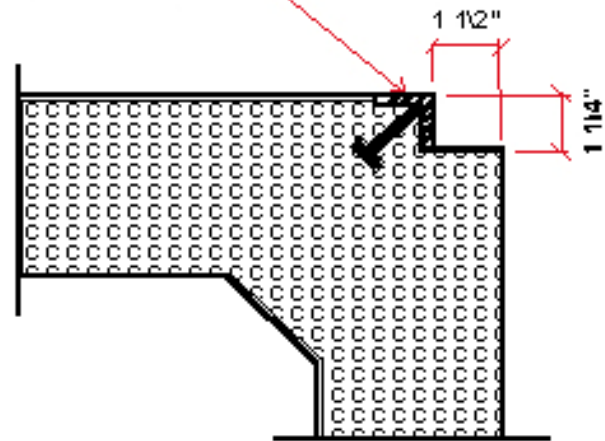
1 1/4" = 1'-0"



SECTION "B"

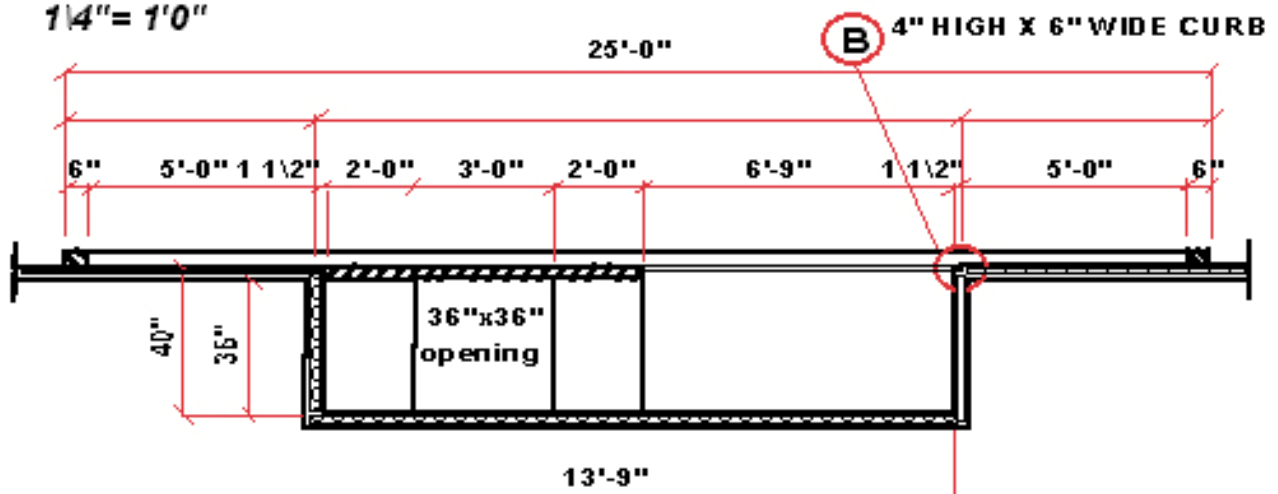
1 1/4" = 1"

1 1/4" X 1 1/4" X 1/4" ANGLE IRON BY OTHERS



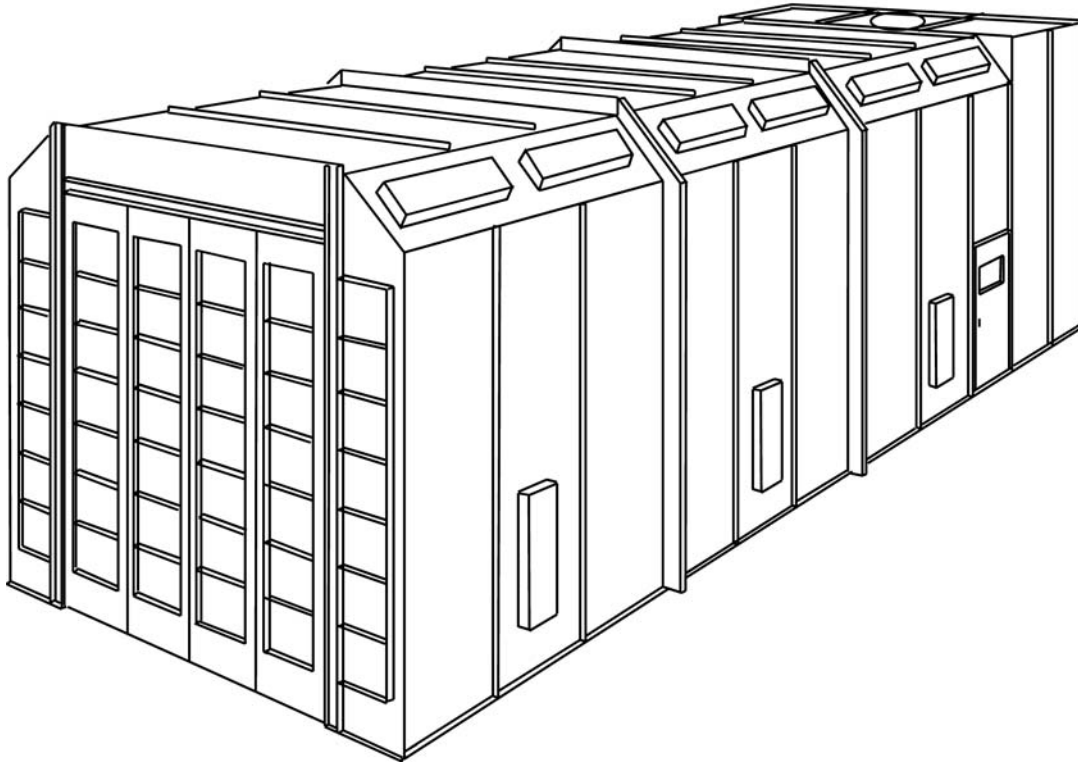
SECTION "C"

1 1/4" = 1'-0"



GIVENS TRUCK AND BUS PAINT SPRAY BOOTH

Givens cross flow paint spray booths are designed to give many years of trouble free service. The incoming air is filtered by Series 55 tacky filters located in the front doors of the booth. This filtered air then passes over the length of the vehicle being painted and is exhausted through the exhaust filters located in the exhaust plenum at the rear of the spray booth. Givens Crossflow Paint Spray Booths and components conform to Occupational Safety and Health Administration (OSHA) standards, T.N.R.C.C. regulations and NFPA code 33 for construction and function.



*All of the **Givens** Truck Booths contain these important features:*

CONSTRUCTION: American-made mill galvanized steel preformed with 2" X 1" companion flanges and holes punched on six inch centers.

(1) 12 *United States Wire Gauge* floor channels, since this is the foundation of the spray booth and the first area of deterioration.

(2) 10 *United States Wire Gauge* door frames and reinforcing beams to insure that your Givens Booth will stand squarely for many years to come.

(3) 18 *United States Wire Gauge* wall and roof panels constituting a two-hour fire wall.

(4) Double 18 *United States Wire Gauge* doors constituting a four-hour fire wall.

Air Filtration: All air filters are Series 55 Rated Tight Seal Tacky carrying a UL Class 2 approval.

Replacements are available from your paint supplier.

(11) The thirty-six each 20" x 20" Series 55 tacky air

filters are located in the front doors of the Truck Booth.

Exhaust Filtration: Fiberglass Exhaust filters 22 gram Extra Heavy Duty 2 ½" thick 41" x 240" (Factory Mutual approved, UL class 2 Listing) insures that more than 96.5% of the over spray particles are trapped. This filter is two continuous pieces making it much easier to change than the conventional 20" x 20" pieces This filter is located in the exhaust plenum at the rear of the paint spray booth.

Lighting: The 18 Sealed 160-watt fluorescent light fixtures provided with every Givens Truck Booth are designed for maximum illumination. Sealed light fixtures have no dust build up to block light inside the booth. Additional fixtures are available at extra cost.

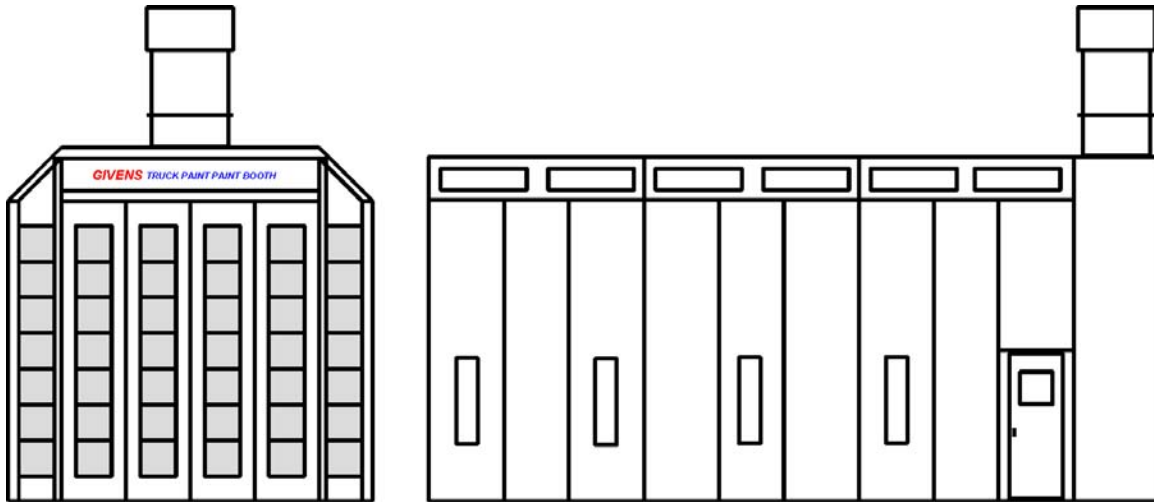
Doors: Doors are double walled with tempered glass observation window. All doors are positively sealed with the use of urethane weather stripping.

GIVENS TRUCK AND BUS PAINT SPRAY BOOTH

EXHAUST STACK: Roof flashing, Combination Automatic Damper and Weather Canopy are included in the price of your Givens Truck Paint Spray Booth.

DELIVERY & MECHANICAL INSTALLATION: Performed by GIVCO. INC., is included in the price of

your Givens Booth. The only additional expenses to your shop are the plumbing of compressed air, installation of an automatic fire extinguishing system, and the connection of electrical power to the lights and exhaust fan.



Booth Clearance 3'0" All Around Recommended

Booth Model Number	Work Dimensions			Overall Dimensions			Nominal Door Openings		Shpg. Weight Lbs.
	Width	Height	Length	Width	Height	Length	Width	Height	
TF-534	16'0"	16'0"	34'0"	17'1"	16'6"	34'5"	12'0"	13'9"	10,000
TF-544	16'0"	16'0"	44'0"	17'1"	16'6"	44'5"	12'0"	13'9"	11,500
TF-554	16'0"	16'0"	54'0"	17'1"	16'6"	54'5"	12'0"	13'9"	13,000

STANDARD EQUIPMENT FURNISHED

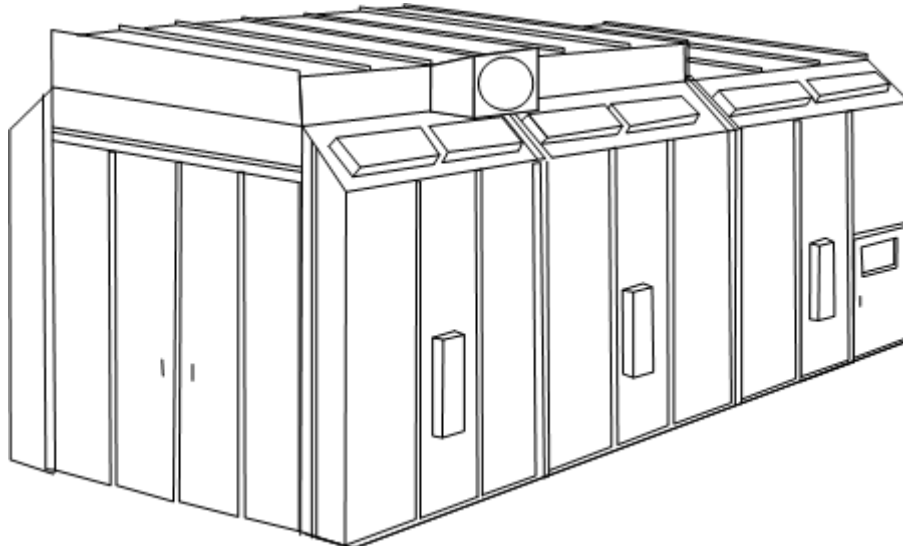
- | | |
|---|--|
| (1) Draft Gauge | on either side of the paint spray booth |
| (2) Double Ring Exhaust Fan powered by a 3 phase Totally enclosed fan cooled electric motor | (8) Combination Automatic Damper and Weather Canopy |
| (3) Eighteen 160 watt 48" sealed Fluorescent Light Fixtures for Class I Division II locations shining through 1/4" tempered glass | (9) One complete set of Series 55 tight seal tacky air filters |
| (4) Two 4'0' lengths of Exhaust Stack. | (10) Extra Change of 22 gram Extra Heavy Duty Exhaust Filter Media |
| (5) Roof Flashing either pitched or flat | (11) All Bolts, nuts and Mounting Hardware |
| (6) One Observation Windows located in the Access Door of the paint booth | (12) Delivery, Mechanical Installation and Initial Start Up by GIVCO, INC. |
| (7) 2'6" x 6'8" Personal Access Door can be located | |

OPTIONS AVAILABLE AT EXTRA COST

- | | |
|---|--|
| (1) Additional Light Fixtures | (7) Special length, width, and height booths available |
| (2) Additional Observation Windows | (8) Paint Mixing Rooms |
| (3) Fluorescent Light Tubes | (9) Prep Stations |
| (4) Motor Starters | (10) Trim Out Booths |
| (5) Single Phase Motors | (11) Safety Control Devices available. Consult Local codes And GIVCO, INC. for the equipment appropriate for your shop |
| (6) Spray Cure Systems with Auto Balance | |

GIVENS SEMI-DOWNDRAFT PRESSURIZED PAINT SPRAY BOOTH

Givens Semi-Downdraft Paint Spray Booths are designed to give many years of trouble-free service. This style booth will produce a much cleaner paint job than a negative pressure booth, because an air intake fan pushes the incoming air into the pre-filters which are located on the side in the top air inlet plenum. The incoming air is filtered a second time through four R-1 52" x 112" filters located in the ceiling at the front of the booth. This filtered air then passes over the length of the vehicle being painted and is exhausted through the exhaust filters located in the bottom of the exhaust plenum at the rear of the booth. This balance of air is controlled by our **auto balance** feature which automatically and continuously senses the static pressure inside the booth and electronically controls a damper which keeps the air flow balanced. Givens Semi-Downdraft Paint Spray Booths and components conform to Occupational Safety and Health Administration (OSHA) standards, T.N.R.C.C. regulations and NFPA code 33 for construction and function.



All of the *Givens* Semi-Downdraft booths contain these important features:

CONSTRUCTION: American-made mill galvanized steel preformed with 2" X 1" companion flanges and holes punched on six inch centers.

(1) 12 *United States Wire Gauge* floor channels, since this is the foundation of the spray booth and the first area of deterioration.

(2) 12 *United States Wire Gauge* door frames and reinforcing beams to insure that the Givens Booth will stand squarely for many years to come.

(3) 18 *United States Wire Gauge* wall and roof panels constituting a two-hour fire wall.

(4) Double 18 *United States Wire Gauge* doors constituting a four-hour fire wall.

Air Filtration: All air filters are Series 55 Rated Tight Seal Tacky carrying a UL Class 2 approval.

Replacements are available from your paint supplier.

(1) The four each 52" x 112" AFR-1 air filters are located in the ceiling.

(2) The 10 pre-filters located on either side of the air intake plenum double filter the incoming air before it reaches the vehicle being painted. They also help the

four each 52" x 112" AFR-1 ceiling filters to last six to twelve times longer, thus saving money over the years.

Exhaust Filtration: Fiberglass Exhaust filters 22 gram Extra Heavy Duty 2 ½" thick 41" x 172" (Factory Mutual approved, UL class 2 Listing) insures that more than 96.5% of the over spray particles are trapped. This filter is in three 54" pieces making it much easier to change than the conventional 20" x 20" pieces. This filter is located at the bottom of the exhaust plenum at the rear of the paint spray booth.

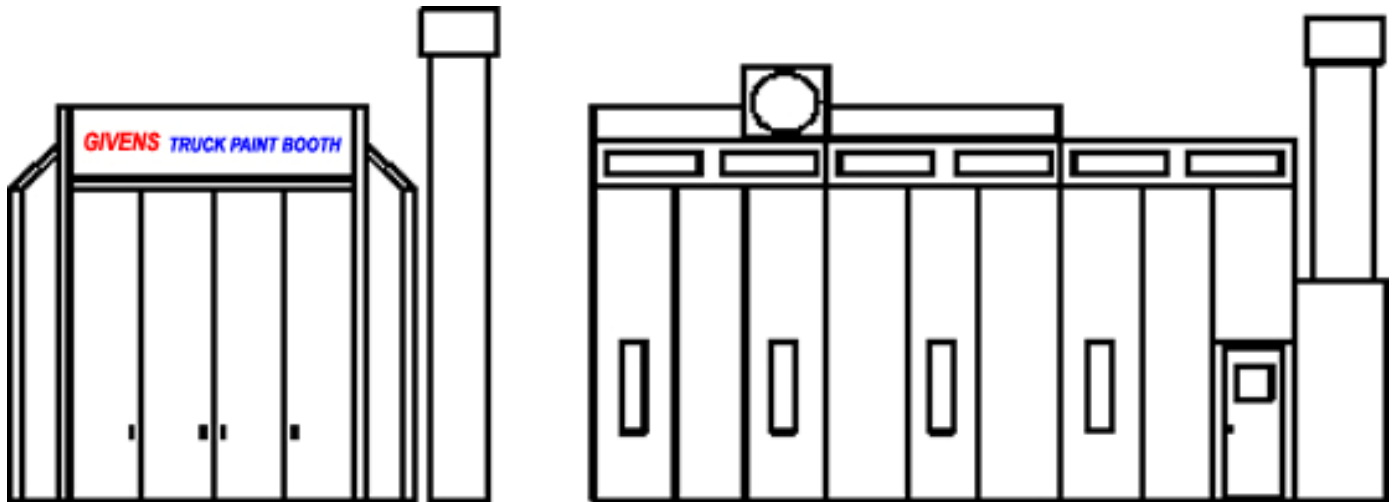
Lighting: The 18 sealed 132-watt, T-8, fluorescent light fixtures provided with every Givens Semi-Downdraft Booth are designed for maximum illumination inside the booth. Sealed light fixtures have no dust build up to block light inside the booth. Additional fixtures are available at extra cost. **Doors:** Doors are double walled with tempered glass observation windows. All doors are positively sealed with the use of urethane weather stripping.

GIVENS SEMI-DOWNDRAFT PRESSURIZED PAINT SPRAY BOOTH

EXHAUST STACK: Roof flashing, Combination Automatic Damper and Weather Canopy are included in the price of your Givens Semi-Downdraft Paint Spray Booth.

DELIVERY & MECHANICAL INSTALLATION: Performed by GIVCO. INC., is included in the price

of your Givens Booth. The only additional expenses to your shop are the plumbing of compressed air, installation of an automatic fire extinguishing system, and the connection of electrical power to the lights, intake and exhaust fans.



Clearance 3'0" All Around Recommended

Booth Model Number	Work Dimensions			Overall Dimensions			Nominal Door Openings		Shpg. Weight Lbs.
	Width	Height	Length	Width	Height	Length	Width	Height	
TSDD-534	16'0"	16'0"	34'0"	17'1"	18'0"	38'5"	12'0"	13'9"	11,000
TSDD-544	16'0"	16'0"	44'0"	17'1"	18'0"	48'5"	12'0"	13'9"	12,500
TSDD-554	16'0"	16'0"	54'0"	17'1"	18'0"	58'5"	12'0"	13'9"	13,500

STANDARD EQUIPMENT FURNISHED

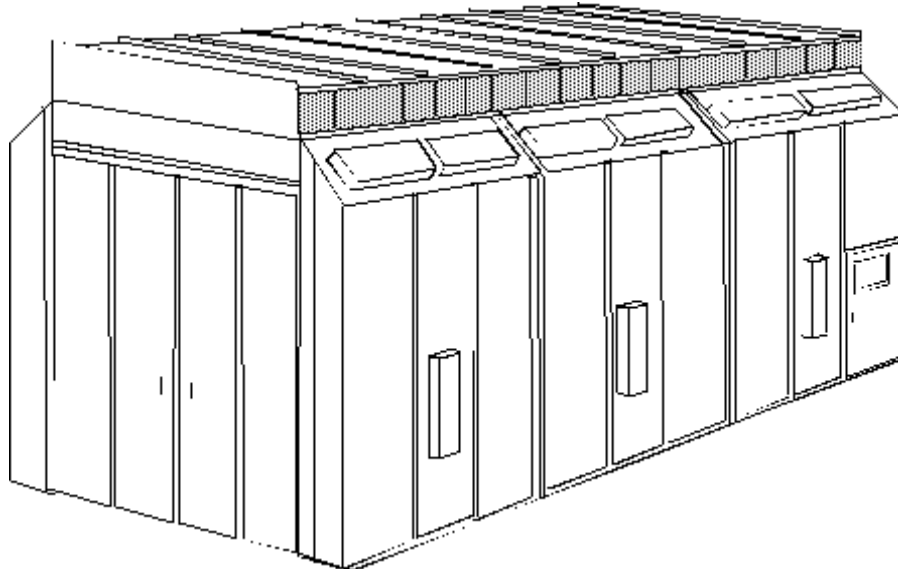
- | | |
|--|--|
| (1) Draft Gauge | (7) Combination Automatic Damper and Weather Canopy |
| (2) Double Ring Exhaust Fan powered by a 3 phase Totally enclosed fan cooled electric motor | (8) One complete set of Series 55 prefilters and AFR-1 Ceiling filters. |
| (3) Eighteen 134 watt T-8, 48" sealed Fluorescent Light Fixtures shining through 1/4" tempered glass | (9) Extra Change of 22 gram Extra Heavy Duty Exhaust Filter Media |
| (4) Three 4'0' lengths of Exhaust Stack. | (10) One 2'6" X 6'8" Personal Access Door |
| (5) Roof Flashing either pitched or flat | (11) All Bolts, nuts and Mounting Hardware |
| (6) Four Observation Windows located in the Doors of the paint booth | (12) Delivery, Mechanical Installation and Initial Start Up by GIVCO, INC. |

OPTIONS AVAILABLE AT EXTRA COST

- | | |
|---|--|
| (1) Additional Light Fixtures | (8) Special length, width, and height booths available |
| (2) Additional Observation Windows | (9) Paint Mixing Rooms |
| (3) Fluorescent Light Tubes | (10) Prep Stations |
| (4) Motor Starters | (11) Trim Out Booths |
| (5) Single Phase Motors | (12) Safety Control Devices available. Consult Local codes And GIVCO, INC. for the equipment appropriate for your shop |
| (6) Spray Cure Systems with Auto Balance | |
| (7) Drive Through Option | |

GIVENS DOWNDRAFT TRUCK PAINT SPRAY BOOTH

Givens Downdraft Truck Paint Spray Booths are designed to give many years of trouble-free service. Since this booth is pitted, the air flow coming from the ceiling has a wrap around effect on the vehicle, then is exhausted through the pit in the floor. This means cleaner paint jobs with the painter being exposed to the least amount Of hazardous materials of any other booth style. Givens Downdraft Truck Paint Spray Booths and components conform to Occupational Safety and Health Administration (OSHA) standards, T.N.R.C.C. regulations and NFPA code 33 for construction and function.



*All of the **Givens** Downdraft truck booths contain these important features:*

CONSTRUCTION: American-made mill galvanized steel preformed with 2" X 1" companion flanges and holes punched on six inch centers.

(1) 12 *United States Wire Gauge* floor channels, since this is the foundation of the spray booth and the first area of deterioration.

(2) 10 *United States Wire Gauge* door frames and reinforcing beams to insure that the Givens Booth will stand squarely for many years to come.

(3) 18 *United States Wire Gauge* wall and roof panels constituting a two-hour fire wall.

(4) Single 18 *United States Wire Gauge* doors constituting a two hour fire wall.

Air Filtration: All air filters are AFR-1 Rated Tight Seal Tacky carrying a UL Class 2 approval.

Replacements are available from your paint supplier.

(1) The six each 48" x 100" R-1 air filters located in the ceiling cut air velocity by one-third, making it three times as efficient as a cross flow booth with one-third the filter area.

(2) The 18 pre-filters located in the side of the air intake plenum double filter the incoming air

before it reaches the vehicle being painted. They also help the six each 48" x 100" R-1 ceiling filters to last from six to twelve times longer, thus saving money over the years.

Exhaust Filtration: Fiberglass Exhaust filters 22 gram Extra Heavy Duty 2 ½" thick 41" x 216" (Factory Mutual approved, UL class 2 Listing) insures that more than 96.5% of the over spray particles are trapped. Having this extra large filter area, the frequency of filter change is cut to a minimum. This filter is located at the top of the pit (Note: Pit is not provided by Givco, Inc.) immediately under the floor grate.

Lighting: The 18 sealed 160-watt fluorescent light fixtures provided with every Givens Downdraft Booth are designed for maximum illumination. Sealed light fixtures have no dust build up to block light inside the booth. Additional fixtures are available at extra cost.

Doors: The Access Door is double walled with a tempered glass observation window . All doors are positively sealed with the use of urethane weather stripping.

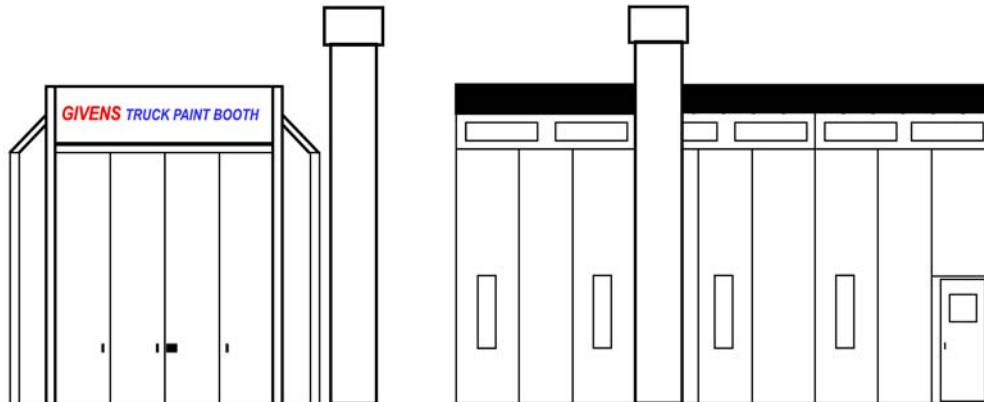
GIVENS DOWNDRAFT TRUCK PAINT SPRAY BOOTH

EXHAUST STACK: Roof flashing, Combination Automatic Damper and Weather Canopy are included in the price of your Givens Downdraft Truck Paint Spray Booth.

DELIVERY & MECHANICAL INSTALLATION

Performed by GIVCO. INC., is included in the price of

your Givens Booth. The only additional expenses to your shop are the plumbing of compressed air, installation of an automatic fire extinguishing system, construction of the exhaust pit, and the connection of electrical power to the lights and the exhaust fan.



Booth Clearance 3'0" All Around Recommended

Booth Model	Work Dimensions			Overall Dimensions			Nominal Door Openings		Shpg. Weight
	Width	Height	Length	Width	Height	Length	Width	Height	
TDD530	16'0"	16'0"	30'0"	17'1"	18'0"	30'6"	11'0"	13'09"	11,100
TDD540	16'0"	16'0"	40'0"	17'1"	18'0"	40'6"	11'0"	13'09"	12,500
TDD550	16'0"	16'0"	50'0"	17'1"	18'0"	50'6"	11'0"	13'09"	13,900
TDD560	16'0"	16'0"	60'0"	17'1"	18'0"	60'6"	11'0"	13'09"	15,300

STANDARD EQUIPMENT FURNISHED

- | | |
|---|--|
| (1) Draft Gauge | (8) Canopy |
| (2) Double Ring Exhaust Fan powered by a 3 phase Totally enclosed fan cooled electric motor | (9) One complete set of Series 55 prefilters and R-1 Ceiling filters. |
| (3) Eighteen 160 watt 48" sealed Fluorescent Light Fixtures shining through 1/4" tempered glass | (10) Extra Change of 22 gram Extra Heavy Duty Exhaust Filter Media |
| (4) Six 4'0" lengths of Exhaust Stack. | (11) One 2'6" X 6'8" Personal Access Door |
| (5) Roof Flashing either pitched or flat | (12) All Bolts, nuts and Mounting Hardware |
| (6) Observation Window located in the Access Door of the paint booth | (12) Delivery, Mechanical Installation and Initial Start Up by GIVCO, INC. |
| (7) Combination Automatic Damper and Weather | |

OPTIONS AVAILABLE AT EXTRA COST

- | | |
|--|--|
| (1) Additional Light Fixtures | (8) Drying Room enclosures |
| (2) Additional Observation Windows | (9) Paint Mixing Rooms |
| (3) Fluorescent Light Tubes | (10) Prep Stations |
| (4) Motor Starters and Single Phase Motors | (11) Trim Out Booths |
| (5) Spray Cure Systems with Auto Balance | (12) Safety Control Devices available. Consult Local codes And GIVCO, INC. for the equipment appropriate for your shop |
| (6) Special length, width, and height booths available | |
| (7) Raised floor Downdraft Booths | |

GIVENS SIDE EXHAUST DOWNDRAFT TRUCK BOOTH

Givens Side Exhaust Downdraft Paint Spray Booths are designed to give many years of trouble-free service. This style booth will produce a much cleaner paint job than the cross-flow style, because the incoming air enters the pre-filters which are located in the top air inlet plenum. The incoming air is filtered a second time through four Series 55 48" x 108" filters located in the ceiling of the paint booth. This filtered air then passes over the top of the vehicle being painted and is exhausted through the exhaust filters located in the bottom of the exhaust plenums on either side of the booth. Givens Side Exhaust Downdraft Paint Spray Booths and components conform to Occupational Safety and Health Administration (OSHA) standards, T.N.R.C.C. regulations and NFPA code 33 for construction and function.



*All of the **Givens** Downdraft truck booths contain these important features:*

CONSTRUCTION: American-made mill galvanized steel preformed with 2" X 1" companion flanges and holes punched on six inch centers.

(1) 12 *United States Wire Gauge* floor channels, since this is the foundation of the spray booth and the first area of deterioration.

(2) 10 *United States Wire Gauge* door frames and reinforcing beams to insure that the Givens Booth will stand squarely for many years to come.

(3) 18 *United States Wire Gauge* wall and roof panels constituting a two-hour fire wall.

(4) Single 18 *United States Wire Gauge* doors constituting a two hour fire wall.

Air Filtration: All air filters are Series 55 Rated Tight Seal Tacky carrying a UL Class 2 approval.

Replacements are available from your paint supplier.

(1) The six each 48" x 100" Series 55 air filters located in the ceiling cut air velocity by one-third, making it three times as efficient as a cross flow booth with one-third the filter area.

(2) The 24 pre-filters located in the side of the air intake plenum double filter the incoming air before it

reaches the vehicle being painted. They also help the six each 48" x 100" Series 55 ceiling filters to last from six to twelve times longer, thus saving money over the years.

Exhaust Filtration: Fiberglass Exhaust filters 22 gram Extra Heavy Duty 2 ½" thick 20" x 400" (Factory Mutual approved, UL class 2 Listing) insures that more than 96.5% of the over spray particles are trapped. This filter is located at the bottom of the exhaust plenums on either side of the paint spray booth.

Lighting: The 28 sealed 160-watt fluorescent light fixtures provided with every Givens Downdraft Booth are designed for maximum illumination. Sealed light fixtures have no dust build up to block light inside the booth. Additional fixtures are available at extra cost.

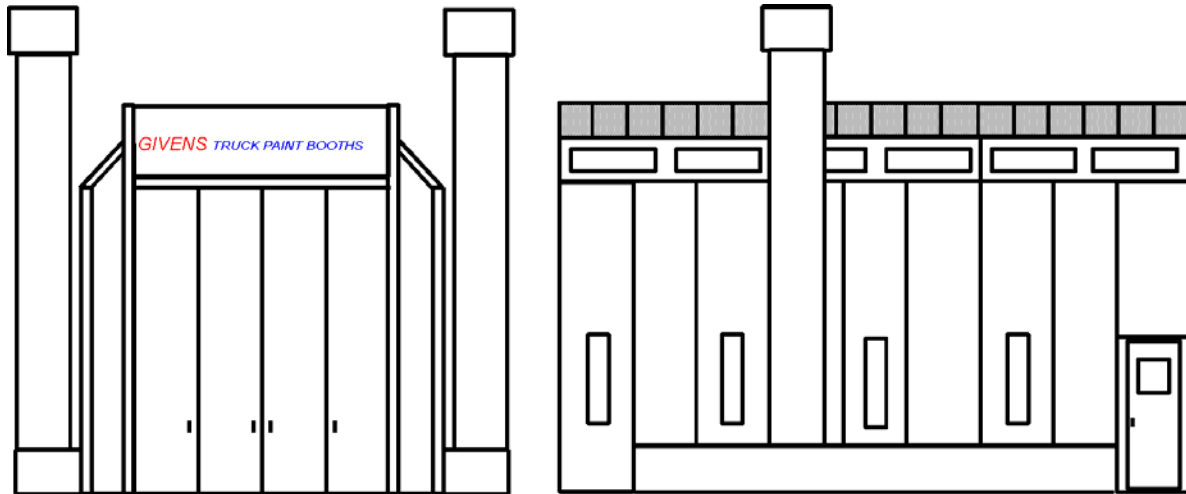
Doors: The Access Door is double walled with a tempered glass observation window. All doors are positively sealed with the use of urethane weather stripping.

GIVENS SIDE EXHAUST DOWNDRAFT TRUCK BOOTH

EXHAUST STACK: Roof flashing, Combination Automatic Damper and Weather Canopy are included in the price of your Givens Downdraft Truck Paint Spray Booth.

DELIVERY & MECHANICAL INSTALLATION: Performed by GIVCO. INC., is included in the price of

your Givens Booth. The only additional expenses to your shop are the plumbing of compressed air, installation of an automatic fire extinguishing system, construction of the exhaust pit, and the connection of electrical power to the lights and the exhaust fan.



Booth Clearance 3'0" All Around Recommended

Booth Model	Work Dimensions			Overall Dimensions			Nominal Door Openings		Shpg. Weight
	Width	Height	Length	Width	Height	Length	Width	Height	
TSEDD540	16'0"	16'0"	40'0"	21'1"	18'0"	40'6"	11'0"	13'09"	12,500
TSEDD550	16'0"	16'0"	50'0"	21'1"	18'0"	50'6"	11'0"	13'09"	13,900
TSEDD560	16'0"	16'0"	60'0"	21'1"	18'0"	60'6"	11'0"	13'09"	15,300
TSEDD570	16'0"	16'0"	70'0"	21'1"	18'0"	70'6"	11'0"	13'09"	16,700
TSEDD580	16'0"	16'0"	80'0"	21'1"	18'0"	80'6"	11'0"	13'09"	18,100

STANDARD EQUIPMENT FURNISHED

- | | |
|---|--|
| (1) Draft Gauge | (8) Canopy |
| (2) Double Ring Exhaust Fan powered by a 3 phase Totally enclosed fan cooled electric motor | (8) One complete set of Series 55 prefilters and R-1 Ceiling filters. |
| (3) Eighteen 160 watt 48" sealed Fluorescent Light Fixtures shining through 1/4" tempered glass | (9) Extra Change of 22 gram Extra Heavy Duty Exhaust Filter Media |
| (4) Six 4'0' lengths of Exhaust Stack. | (10) One 2'6" X 6'8" Personal Access Door |
| (5) Roof Flashing either pitched or flat | (11) All Bolts, nuts and Mounting Hardware |
| (6) Observation Window located in the Access Door of the paint booth | (12) Delivery, Mechanical Installation and Initial Start Up by GIVCO, INC. |
| (7) Combination Automatic Damper and Weather | |

OPTIONS AVAILABLE AT EXTRA COST

- | | |
|--|--|
| (1) Additional Light Fixtures | (8) Drying Room enclosures |
| (2) Additional Observation Windows | (9) Paint Mixing Rooms |
| (3) Fluorescent Light Tubes | (10) Prep Stations |
| (4) Motor Starters and Single Phase Motors | (11) Trim Out Booths |
| (5) Spray Cure Systems with Auto Balance | (12) Safety Control Devices available. Consult Local codes And GIVCO, INC. for the equipment appropriate for your shop |
| (6) Special length, width, and height booths available | |
| (7) Raised floor Downdraft Booths | |

GIVENS AUTOMOTIVE PAINT MIXING ROOMS

Givens Paint Mixing Rooms are designed to give many years of trouble-free service. The incoming air is filtered by Series 55 tacky filters located in the wall of the Paint Mixing Room. This filtered air then passes over the length of the Paint Mixing Room and is exhausted through the exhaust fan located in the roof of the Paint Mixing Room. Givens Paint Mixing Rooms and components conform to Occupational Safety and Health Administration (OSHA) standards, T.N.R.C.C. regulations and NFPA code 33 for construction and function.



*All of the **Givens** Paint Mixing Rooms contain these important features:*

CONSTRUCTION: American-made mill galvanized steel pre-punched on six inch centers and preformed with 2" X 1" companion flanges.

(1) 12 *United States Wire Gauge* floor channels, since this is the foundation of the mixing room and the first area of deterioration.

(2) 10 *United States Wire Gauge* door frames and reinforcing beams to insure that the Givens mixing room will stand squarely for many years to come.

(3) 18 *United States Wire Gauge* wall and roof panels constituting a two-hour fire wall.

(4) Double 18 *United States Wire Gauge* doors constituting a four-hour fire wall.

Air Filtration: All air filters are Series 55 Rated Tight

Seal Tacky carrying a UL Class 2 approval.

Replacements are available from your paint supplier.

(1) The two each 20" x 20" Series 55 air filters are located in the wall of the Mixing Room.

Lighting: The sealed 160-watt fluorescent light fixtures provided with every Givens Paint Mixing Room are designed for maximum illumination. Sealed light fixtures have no dust build up to block light inside the room. Additional fixtures are available at extra cost.

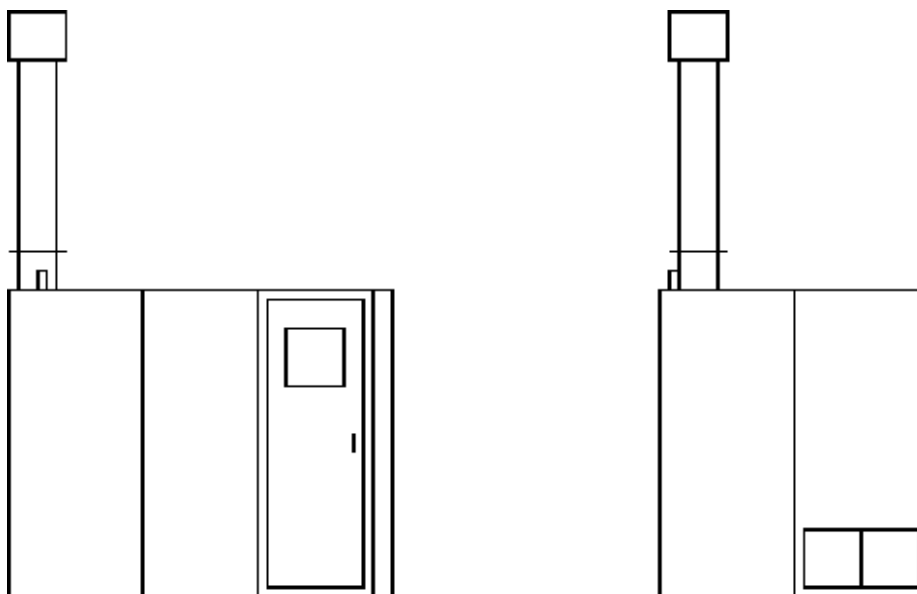
Doors: The Access Door is double walled with a tempered glass observation window. All doors are positively sealed with the use of urethane weather stripping.

GIVENS AUTOMOTIVE PAINT MIXING ROOMS

EXHAUST STACK: Roof flashing, and Weather Canopy are included in the price of your Givens Paint Mixing Room.

DELIVERY & MECHANICAL INSTALLATION: Performed by GIVCO. INC., is included in the price

of your Givens Paint Mixing Room. The only additional expenses to your shop are the plumbing of compressed air, installation of an automatic fire extinguishing system, and the connection of electrical power to the lights and exhaust fan.



Mixing Room Clearance 3'0" All Around Recommended

Booth Model Number	Work Dimensions			Overall Dimensions			Nominal Door Openings		Shpg. Weight Lbs.
	Width	Height	Length	Width	Height	Length	Width	Height	
PMR-10-7	7'0"	8'0"	10'0"	7'5"	8'6"	10'5"	2'6"	6'8"	1400
PMR-14-7	7'0"	8'0"	14'0"	7'5"	8'6"	14'11"	2'6"	6'8"	1800

STANDARD EQUIPMENT FURNISHED

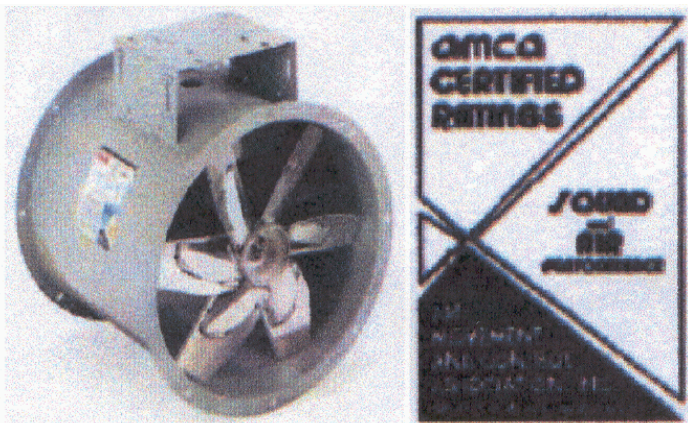
- | | |
|---|---|
| (1) Urethane door seals | (7) 2'6" x 6'8" Personal Access Door can be located on either side of the paint mixing room |
| (2) Double Ring Exhaust Fan powered by a 1 phase Totally enclosed fan cooled electric motor | (8) Weather Canopy |
| (3) One 160 watt 48" sealed Fluorescent Light Fixture shining through 1/4" clear tempered glass | (9) One complete set of Series 55 tight seal tacky air filters |
| (4) Two 5'0' lengths of Exhaust Stack | (10) Silicone caulking |
| (5) Roof Flashing either pitched or flat | (11) All bolts, nuts and Mounting Hardware |
| (6) One Observation Windows located in the Door of the mixing room | (12) Delivery, Mechanical Installation and Initial Start Up by GIVCO, INC. |

OPTIONS AVAILABLE AT EXTRA COST

- | | |
|--|--|
| (1) Additional Light Fixtures | (8) Paint Spray Booths |
| (2) Additional Observation Windows | (9) Prep Stations |
| (3) Fluorescent Light Tubes | (10) Trim Out Booths |
| (4) Motor Starters | (11) Safety Control Devices available. Consult Local codes And GIVCO, INC. for the equipment appropriate for your shop |
| (5) Three Phase Motors | |
| (6) Spray Cure Systems with Auto Balance | |
| (7) Special length, width, and height booths available | |

GIVENS AUTOMOTIVE PAINT BOOTHS

12" To 48" Belt-Drive Tubeaxial Fan Performance Ordering Data



Dayton Electric Mfg. Co. certifies that the tubeaxial fans shown herein are licensed to bear the AMCA Seal. The ratings shown are based on tests and procedures performed in accordance with AMCA Publication 211 and AMCA Publication 311 and comply with the requirements of the AMCA Certified Ratings Program. The sound power level ratings shown in decibels referred to 10-12 watt calculated per AMCA Standard 301. The A weighted sound ratings shown have been calculated per AMCA Standard 301. Values shown for tubeaxial fans are for (inlet Lwa) sound power levels for: Installation Type B: Free Inlet, Ducted Outlet. Ratings do not include the effects of duct end corrections. Tubeaxial fans designed for use in industrial ventilation systems to exhaust paint spray booths, cleaning tanks and mixing rooms. Designed to operate in any position Streamlined belt tunnel isolates the motor, drives, and bearings from air stream Precision balanced spark-resistant aluminum fan blades. Steel housing is iron phosphate processed for rust protection with an acrylic epoxy paint finish.

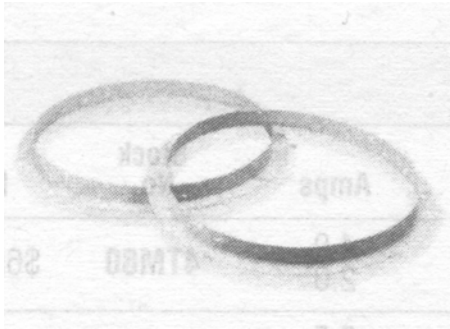
Fan (In)	CFM & Sound Power Lw (A) Decibel Static Pressure							Fan RPM	Motor HP	Stock Price		Fans With Single Phase Motors		Fans With Three Phase Motors
	0"	.125"	.250"	.500"	0.75	1.00"	1.25"			No.				
12	2432	1667	1561	1415	779	—	—	2090	1/3	4C659	\$442.88	7F924	\$684.00	
	84	83	82	81	—	—	—							
	1904	1812	1719	1561	1429	—	—	2253	1/2			7F927	\$702.00	
	86	85	84	83	83	—	—							
	2432	2360	2287	2215	2126	2020	1905	2877	3/4			7F930	754.75	
	92	92	91	91	91	91	91							
18	4039	3841	3624	3112	1850	923	—	1719	3/4	4C661	\$592.50	7F951	882.00	
	87	87	87	93	91	91	—							
	4671	4504	4321	3914	3421	2163	—	1988	1			7F954	\$955.50	
	90	90	90	93	95	95	—							
	5298	5152	4994	4660	3803	3803	2705	2255	1.5			7F957	1032.75	
	94	93	93	95	98	98	98							
24	7085	6695	6260	5800	5250	—	—	1312	1	3C412	\$773.25	7F960	1183.00	
	89	88	89	90	92	—	—							
	7945	7575	7200	8780	6300	5760	4960	1466	1.5					7F830 \$1111.00
	92	90	91	92	93	96	95							
	9140	8820	8500	8185	7800	7400	6950	1688	2					7F831 \$1169.50
	96	96	97	97	97	97	98							
	10600	10205	9860	9620	9380	9140	8870	1910	3					7F832 \$1223.00
	99	98	99	99	98	98	98							
30	10955	10415	9815	8395	—	—	—	1030	1.5	3C412	\$1115.24			7F840 \$1440.00
	90	89	89	92	—	—	—							
	12190	11710	11180	9990	8485	—	—	1146	2					7F841 \$1494.50
	93	94	94	94	96	—	—							
	14040	13630	13180	12220	11105	9740	—	1320	3					7F842 \$1550.00
	97	96	96	96	98	99	—							
	16495	16150	15785	14995	14145	13190	12125	1551	5					7F843 \$1608.00

GIVENS **AUTOMOTIVE PAINT BOOTHS**

12" To 48" Belt-Drive Tubeaxial Fan Performance Ordering Data

Fan (In)	CFM & Sound Power Lw (A) Decibel Static Pressure							Fan Motor		Stock	Price	<i>Fans With Single Phase Motors</i>	<i>Fans With Three Phase Motors</i>
	0"	.125"	.250"	.500"	0.75"	1.00"	1.25"	RPM	HP	No.			
34	14430	13760	13020	11285	7155	___	___	936	2	3C413	\$1251.00		7F840 \$1636.50
	94	92	92	95	96	___	___						
	16560	15985	15350	13985	12305	7750	___	1074	3				7F852 \$1693.50
	100	100	99	99	101	103	___						
	19920	18800	18280	17250	15880	14445	12180	1251	5				7F853 \$1770.00
	102	103	101	101	101	103	104						
36	15255	14455	13570	11430	___	___	___	837	2	3C414	\$1295.92		7F860 \$1683.00
	92	90	90	94	___	___	___						
	17570	16890	16135	14450	12345	___	___	964	3				7F861 \$1744.00
	98	98	97	98	100	___	___						
	20650	20080	19460	18135	16605	14825	___	1133	5				7F862 \$1797.00
	100	101	100	99	100	102							
42	21465	20430	19275	16555	___	___	___	746	3	3C415	\$1782.14		7F870 2187.00
	91	91	92	95	___	___	___						
	25320	24460	23505	21435	18965	___	___	880	5				7F871 \$2268.00
	98	98	98	99	100	___	___						
	29150	28410	27610	25900	23960	21775	18120	1013	7.5				7F872 \$2404.00
	100	101	101	102	103	104	103						
	33005	32255	31670	30185	28620	26850	24920	1147	10				7F873 \$2524.00
48	31260	30070	28745	25810	22170	___	___	731	5	3C416	2199.53		7F831 \$2701.00
	100	98	98	98	100	___	___						
	35365	34325	33185	30150	27900	24390	___	827	7.5				7F882 \$2851.00
	102	102	102	101	101	102	___						
	38100	37140	36105	33885	31360	28550	24060	891	10				7F883 \$2973.00
	102	104	104	104	103	104	105						

Companion Flange Ordering Data

Fan Dia. In.	Fits Fan #	Stock #	Price Ea.	
12	4C659	4C716	\$40.50	
18	4C661	4C718	\$47.00	
24	3C411	3C436	\$54.50	
30	3C412	3C440	\$62.00	
34	3C413	3C441	\$69.00	
36	3C414	3C442	\$78.00	
42	3C415	3C443	\$88.00	
48	3C416	3C444	\$96.00	

Givens Automotive Paint Spray Booths

