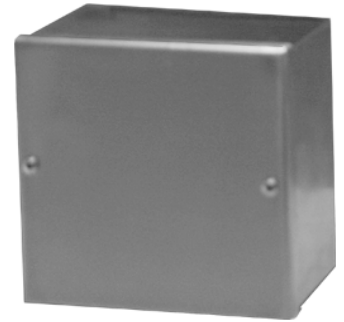




22133 Old Nacogdoches Rd. New Braunfels, Tx 78132



Standard Sizes

W	H	D	List
4	4	3	40.00
4	6	3	46.00
6	8	3.5	55.00
4	4	4	42.00
4	6	4	50.00
6	6	4	53.00
8	8	4	63.00
8	10	4	73.00
6	12	4	71.00
10	12	5	91.00
6	8	6	69.00
8	10	6	82.00
10	10	6	93.00
12	12	6	105.00
12	14	6	105.00
10	16	6	110.00
14	16	6	130.00
10	12	8	95.00
12	14	8	124.00
14	16	8	144.00
14	16	10	158.00

NEMA 4

Nema type 4 Continuous Hinge Clamp Cover

Enclosures Application

NEMA Type 4 Continuous Hinge Clamp Cover Enclosures are designed for use in areas that are hosed down or extremely wet.

Construction

Made from Paint Grip Galvanized Steel in 14, 16 and 18 gauge. The seams are continuously welded with no holes or knockouts. Clamps are provided the sides of the cover for securing the gasketed cover. A continuous hinge is provided. The enclosures can also be painted. The covers are also sealed by a neoprene gasket held in place by an oil resistant adhesive. External feet are furnished for mounting. These enclosures can also be ordered with an optional back panel.

Finish

The Standard finish is ANSI Grey inside and out.

Industry standards

These screw cover enclosures conform to the standards set by the National Electrical Manufacturers Association for Type 4 (water tight and dust tight), Type 12 (industrial use) and Type 13 (oil tight and dust tight) enclosures. Also conforms to JIC standard EGP-1-1967.